

# Anti-NifU-like protein 3, chloroplastic, C-terminal antibody

Catalog: PHY1449A

## Product Information

<b>Description:</b>	Rabbit polyclonal antibody
<b>Background:</b>	Nitrogen-Fixing-subunit-U-type protein NFU3 is a protein containing the NFU domain that may act an iron-sulfur scaffold protein in the assembly and transfer of 4Fe-4S and 3Fe-4S clusters in the chloroplast. Other this family proteins are including NFU1 (AT4G01940) and 2 (AT5G49940) than to NFU4 (AT3G20970) and 5 (AT1G51390).
<b>Synonyms:</b>	NFU3, ATCNFU3, NFU DOMAIN PROTEIN 3
<b>Immunogen:</b>	KLH-conjugated synthetic peptide (18 aa from C terminal section) derived from <i>Arabidopsis thaliana</i> NFU3 (AT4G25910).
<b>Form:</b>	Lyophilized
<b>Quantity:</b>	150 µg
<b>Purification:</b>	Immunogen affinity purified
<b>Reconstitution:</b>	Reconstitution with 150 µl of sterile 1XPBS (PH=7.4). "Note: please spin tube briefly prior to opening it to avoid any losses that might occur from lyophilized material adhering to the cap or sides of the tube".
<b>Stability &amp; Storage:</b>	Use a manual defrost freezer and avoid repeated freeze-thaw cycles. 12 months from date of receipt, -20 to -70°C as supplied. 6 months, -20 to -70°C under sterile conditions after reconstitution. 1 month, 2 to 8°C under sterile conditions after reconstitution.
<b>Shipping:</b>	The product is shipped at 4°C. Upon receipt, store it immediately at the temperature recommended above.

## Application Information

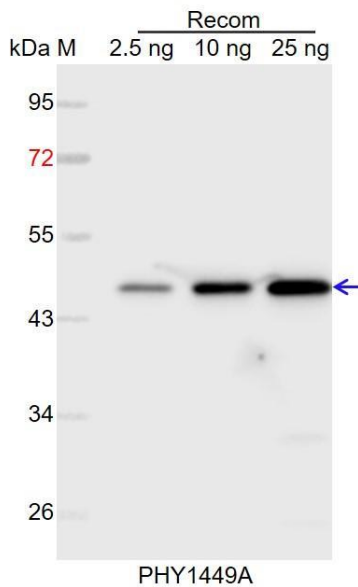
<b>Recommended Dilution:</b>	Western Blot (1:1000-1:2000) Note: Optimal dilutions/concentrations should be determined by the end user.
<b>Expected / apparent MW:</b>	26 kDa
<b>Predicted Reactivity:</b>	Among species analyzed, the sequence of the synthetic peptide used for immunization is 80-99% homologues with the sequence in <i>Brassica</i>

Research Use Only

*rapa*, *Brassica napus*, *Populus trichocarpa*, *Gossypium raimondii*,  
*Cucumis sativus*, *Solanum tuberosum*, *Solanum lycopersicum*,  
*Spinacia oleracea*, *Oryza sativa*, *Setaria viridis*, *Sorghum bicolor*,  
*Triticum aestivum*, *Hordeum vulgare*, *Panicum virgatum*, *Zea mays*.

For more species homologues information, please contact tech support at [tech@phytoab.com](mailto:tech@phytoab.com).

## Application Example



Recom: 2.5 ng, 10 ng and 25 ng recombinant protein containing the peptide for immunization and having a molecular mass of 46 kDa.

**Electrophoresis:** 12% SDS-PAGE

**Transfer:** blotting to NC (nitrocellulose) membrane for 1 h.

**Blocking:** 5% skim milk at RT or 4°C for 1 h.

**Primary antibody:** 1:1000 dilution overnight at 4°C.

**Secondary antibody:** 1:10000 dilution using Goat Anti-Rabbit IgG H&L (HRP) (Cat# PHY6000).

**Detection:** using chemiluminescence substrate and image were captured with CCD camera.