

Anti-Lhca5 protein of LHCI antibody

Catalog: PHY1310S

Product Information

Description:	Rabbit polyclonal antibody
Background:	The light-harvesting complex (LHC) consists of chlorophylls A and B and the chlorophyll A-B binding protein. Lhca5 is a low abundant chlorophyll a/b-binding protein that has been found to associate with Photosystem I in sub-stoichiometric amounts. Unlike the four main Lhca-types (Lhca1-4) Lhca5 seems to be able to associate with PSI or the LHCI at varying positions.
Synonyms:	Lhca5
Immunogen:	KLH-conjugated synthetic peptide of Lhca5 derived from <i>Arabidopsis thaliana</i> AT1G45474.
Form:	Lyophilized
Quantity:	150 µg
Purification:	Serum Peptide affinity form antibody available upon request at info@phytoab.com .
Reconstitution:	Reconstitution with 150 µl of sterile water. "Note: please spin tube briefly prior to opening it to avoid any losses that might occur from lyophilized material adhering to the cap or sides of the tube".
Stability & Storage:	Use a manual defrost freezer and avoid repeated freeze-thaw cycles. 12 months from date of receipt, -20 to -70°C as supplied. 6 months, -20 to -70°C under sterile conditions after reconstitution. 1 month, 2 to 8°C under sterile conditions after reconstitution.
Shipping:	The product is shipped at 4°C. Upon receipt, store it immediately at the temperature recommended above.

Application Information

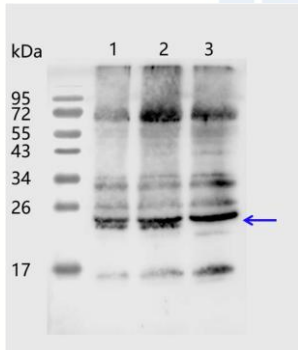
Recommended Dilution:	Western Blot (1:1000-1:2000) Note: Optimal dilutions/concentrations should be determined by the end user.
Expected/apparent MW:	28 / 24 kDa
Confirmed Reactivity:	<i>Arabidopsis thaliana</i>

Research Use Only

Predicted Reactivity:

For more species homologues information, please contact tech support at tech@phytoab.com.

Application Example



1-2 is thylakoid membrane protein from WT of *Arabidopsis thaliana* leaf containing 2.5 µg, and 5 µg of chlorophyll, respectively.

3 is thylakoid membrane protein from Lhca5 mutant of *Arabidopsis thaliana* leaf containing 5 µg of chlorophyll.

Electrophoresis: 15% SDS-Urea-PAGE

Transfer: blotting to NC (nitrocellulose) membrane for 1 h.

Blocking: 5% skim milk at RT or 4°C for 1 h.

PHY1310S

Primary antibody: 1:1000 dilution overnight at 4°C.

Secondary antibody: 1:10000 dilution using Goat Anti-Rabbit IgG H&L (HRP) (Cat# PHY6000).

Detection: using chemiluminescence substrate and image were captured with CCD camera.