

Anti-Cyanobacterial homolog of plant CHL27 cyclase antibody

Catalog: PHY1312A

Product Information

Description:	Rabbit polyclonal antibody
Background:	CRD1 is a putative ZIP protein with varying mRNA accumulation in leaves, stems and roots. It has a consensus carboxylate-bridged di-iron binding site.
Synonyms:	CRD1, ACSF, CHL27, COPPER RESPONSE DEFECT 1
Immunogen:	KLH-conjugated synthetic peptide of CRD1 derived from <i>Arabidopsis thaliana</i> AT3G56940.
Form:	Lyophilized
Quantity:	150 µg
Purification:	Immunogen affinity purified
Reconstitution:	Reconstitution with 150 µl of 0.01 M sterile PBS. "Note: please spin tube briefly prior to opening it to avoid any losses that might occur from lyophilized material adhering to the cap or sides of the tube".
Stability & Storage:	Use a manual defrost freezer and avoid repeated freeze-thaw cycles. 12 months from date of receipt, -20 to -70°C as supplied. 6 months, -20 to -70°C under sterile conditions after reconstitution. 1 month, 2 to 8°C under sterile conditions after reconstitution.
Shipping:	The product is shipped at 4°C. Upon receipt, store it immediately at the temperature recommended above.

Application Information

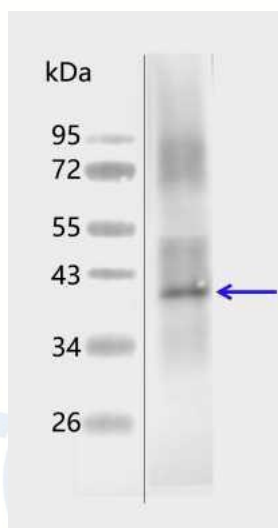
Recommended Dilution:	Western Blot (1:1000-1:2000) Note: Optimal dilutions/concentrations should be determined by the end user.
Expected/apparent MW:	48 / 40 kDa
Confirmed Reactivity:	<i>Arabidopsis thaliana</i>
Predicted Reactivity:	Among species analyzed, the sequence of the synthetic peptide used for immunization is 100% homologues with the sequence in <i>Brassica napus</i> , <i>Oryza sativa Japonica Group</i> , <i>Vitis vinifera</i> , <i>Triticum</i>

Research Use Only

aestivum, *Solanum tuberosum*, *Populus trichocarpa*, *Glycine max*, *Physcomitrium patens*, *Hordeum vulgare*, *Setaria viridis*, *Gossypium raimondii*, *Cucumis sativus*, *Brassica rapa*, *Zea mays*, *Sorghum bicolor*, *Solanum lycopersicum*, *Nicotiana tabacum*, *Medicago truncatula*, *Spinacia oleracea*, and 80-99% homologues with the sequence in *Chlamydomonas reinhardtii*, *Synechococcus elongates* PCC 7942, *Synechocystis* sp. PCC 6803.

For more species homologues information, please contact tech support at tech@phytoab.com.

Application Example



PHY1312A

Thylakoid membrane protein from *Arabidopsis thaliana* containing 2.5 µg of chlorophyll.

Electrophoresis: 15% SDS-PAGE

Transfer: blotting to NC (nitrocellulose) membrane for 1 h.

Blocking: 5% skim milk at RT or 4°C for 1 h.

Primary antibody: 1:1000 dilution overnight at 4°C.

Secondary antibody: 1:10000 dilution using Goat Anti-Rabbit IgG H&L(HRP) (Cat# PHY6000).

Detection: using chemiluminescence substrate and image were captured with CCD camera.