

Anti-Barley mild mosaic virus (BaMMV) coat protein antibody

Catalog: NAV1007-001

Quantity: 200 µL

Immunogen Information:

Background

Barley mild mosaic virus (BaMMV)

Immunogen

Recombinant protein of BaMMV (2-251aa) derived from Barley mild mosaic virus coat protein (NCBI: BAC55922). [We also have antibodies for different epitopes from the Capsid protein. Please request at \[info@nanodiaincs.com\]\(mailto:info@nanodiaincs.com\) or <https://www.nanodiaincs.com>.](#)

Basic Information:

Purification: Protein A purified

Peptide affinity form antibody available upon request at info@nanodiaincs.com.

Clonality: Polyclonal **Expected MW:** 28 kDa **Host:** Rabbit

Product Information:

Form: Lyophilized

Reconstitution

Reconstitution with 200 µL of sterile water.

"Note: please spin tube briefly prior to opening it to avoid any losses that might occur from lyophilized material adhering to the cap or sides of the tube".

Stability & Storage

Use a manual defrost freezer and avoid repeated freeze-thaw cycles.

12 months from date of receipt, -20 to -70°C as supplied.

6 months, -20 to -70°C under sterile conditions after reconstitution.

1 month, 2 to 8°C under sterile conditions after reconstitution.

Shipping

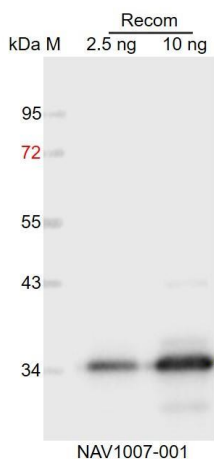
The product is shipped at 4°C. Upon receipt, store it immediately at the temperature recommended above.

Applications Information:

Recommended Dilution: WB (1:1000-1:2000)

Predicted Reactivity: For more species homologues information, please contact tech support at info@nanodiaincs.com.

Example



Recom: 2.5 ng and 10 ng recombinant protein containing the peptide for immunization and having a molecular mass of 35 kDa.

Electrophoresis: 12% SDS-PAGE

Transfer: blotting to NC (nitrocellulose) membrane for 1 h.

Blocking: 5% skim milk at RT or 4°C for 1 h.

Primary antibody: 1:1000 dilution overnight at 4°C.

Secondary antibody: 1:10000 dilution using Goat Anti-Rabbit IgG

H&L (HRP) (Cat# PHY6000).

Detection: using chemiluminescence substrate and image were captured with CCD camera.