

Anti-PsaE subunit of photosystem I antibody

Catalog: PHY0162S

Product Information

| | |
|---------------------------------|---|
| Description: | Rabbit polyclonal antibody |
| Background: | PsaE-1 is part of the stromal side of photosystem I (PSI). In <i>Arabidopsis thaliana</i> , the two nuclear genes <i>PsaE1</i> and <i>PsaE2</i> code for PSI-E, and transcripts of PsaE1 are markedly more abundant than PsaE2 transcripts. |
| Synonyms: | PSAE-1, PSA E1 KNOCKOUT |
| Immunogen: | KLH-conjugated synthetic peptide (16 aa from Central section) derived from <i>Arabidopsis thaliana</i> PsaE-1 (AT4G28750). |
| Form: | Lyophilized |
| Quantity: | 150 µg |
| Purification: | Serum Peptide affinity form antibody available upon request at info@phytoab.com . |
| Reconstitution: | Reconstitution with 150 µl of sterile water. "Note: please spin tube briefly prior to opening it to avoid any losses that might occur from lyophilized material adhering to the cap or sides of the tube". |
| Stability & Storage: | Use a manual defrost freezer and avoid repeated freeze-thaw cycles. 12 months from date of receipt, -20 to -70°C as supplied. 6 months, -20 to -70°C under sterile conditions after reconstitution. 1 month, 2 to 8°C under sterile conditions after reconstitution. |
| Shipping: | The product is shipped at 4°C. Upon receipt, store it immediately at the temperature recommended above. |

Application Information

| | |
|------------------------------|--|
| Recommended Dilution: | Western Blot (1:1000-1:4000) Note: Optimal dilutions/concentrations should be determined by the end user. |
| Expected/apparent MW: | 15 kDa |
| Predicted Reactivity: | Among species analyzed, the sequence of the synthetic peptide used for immunization is 100% homologues with the sequence in <i>Brassica rapa</i> , <i>Brassica napus</i> and 80-99% homologues with the sequence in <i>Hordeum vulgare</i> , <i>Sorghum bicolor</i> , <i>Panicum virgatum</i> , <i>Setaria</i> |

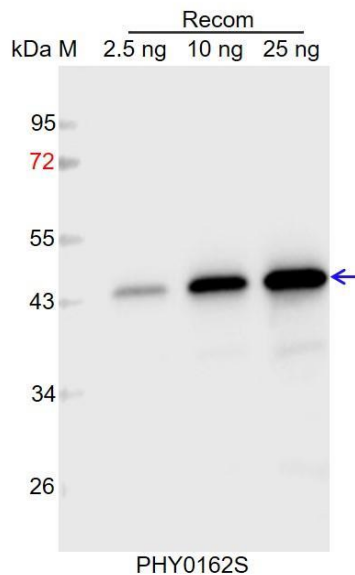
Research Use Only

viridis, *Oryza sativa*, *Gossypium raimondii*, *Triticum aestivum*, *Zea mays*, *Medicago truncatula*, *Glycine max*, *Cucumis sativus*, *Populus trichocarpa*, *Cucumis sativus*, *Vitis vinifera*, *Solanum tuberosum*, *Solanum lycopersicum*, *Spinacia oleracea*, *Chlamydomonas reinhardtii*.

The sequence of the synthetic peptide used for immunization is 94% (15 / 16) homologues with the sequence in PSAE-2 (AT2G20260).

For more species homologues information, please contact tech support at tech@phytoab.com.

Application Example



Recom: 2.5 ng, 10 ng and 25 ng recombinant protein containing the peptide for immunization and having a molecular mass of 43 kDa.

Electrophoresis: 12% SDS-PAGE

Transfer: blotting to NC (nitrocellulose) membrane for 1 h.

Blocking: 5% skim milk at RT or 4°C for 1 h.

Primary antibody: 1:1000 dilution overnight at 4°C.

Secondary antibody: 1:10000 dilution using Goat Anti-Rabbit IgG H&L (HRP) (Cat# PHY6000).

Detection: using chemiluminescence substrate and image were captured with CCD camera.