

Anti-Cytosolic fructose-1,6 biphosphatase antibody

Catalog: PHY1301S

Product Information

Description:	Rabbit polyclonal antibody
Background:	Fructose-1,6-bisphosphatase catalyzes the formation of fructose-6-phosphate for sucrose biosynthesis, it appears to play a role in fructose-mediated signaling that is independent of its enzymatic activity. During the photosynthesis, two isoforms of the fructose-1,6-bisphosphatase (FBPase), the chloroplastial (cFBP1) (AT3G54050) and the cytosolic (cyFBP) (AT1G43670), catalyse the first irreversible step during the conversion of triose phosphates (TP) to starch or sucrose, respectively.
Synonyms:	cFBPase, ATCFBP, CYFBP, FBP, FINS1, FRUCTOSE INSENSITIVE 1, FRUCTOSE-1,6-BISPHOSPHATASE
Immunogen:	KLH-conjugated synthetic peptide (15 aa from Central section) derived from <i>Arabidopsis thaliana</i> cFBPase (AT1G43670).
Form:	Lyophilized
Quantity:	150 µg
Purification:	Serum Peptide affinity form antibody available upon request at info@phytoab.com .
Reconstitution:	Reconstitution with 150 µl of sterile water. "Note: please spin tube briefly prior to opening it to avoid any losses that might occur from lyophilized material adhering to the cap or sides of the tube".
Stability & Storage:	Use a manual defrost freezer and avoid repeated freeze-thaw cycles. 12 months from date of receipt, -20 to -70°C as supplied. 6 months, -20 to -70°C under sterile conditions after reconstitution. 1 month, 2 to 8°C under sterile conditions after reconstitution.
Shipping:	The product is shipped at 4°C. Upon receipt, store it immediately at the temperature recommended above.

Application Information

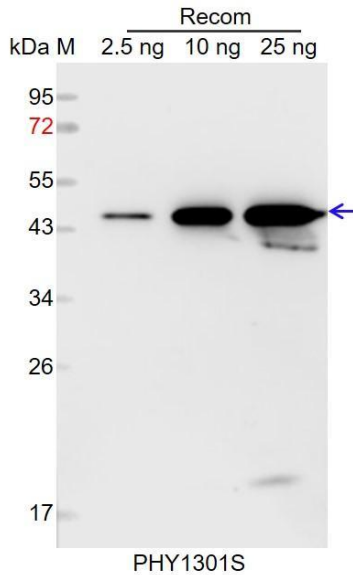
Recommended Dilution:	Western Blot (1:1000-1:2000) Note: Optimal dilutions/concentrations should be determined by the end user.
------------------------------	--

Research Use Only

Expected / apparent MW: 37 kDa

Predicted Reactivity: For more species homologues information, please contact tech support at tech@phytoab.com.

Application Example



Recom: 2.5 ng, 10 ng and 25 ng recombinant protein containing the peptide for immunization and having a molecular mass of 45 kDa.

Electrophoresis: 12% SDS-PAGE

Transfer: blotting to NC (nitrocellulose) membrane for 1 h.

Blocking: 5% skim milk at RT or 4°C for 1 h.

Primary antibody: 1:1000 dilution overnight at 4°C.

Secondary antibody: 1:10000 dilution using Goat Anti-Rabbit IgG H&L (HRP) (Cat# PHY6000).

Detection: using chemiluminescence substrate and image were captured with CCD camera.