

# Anti-Coronatine-insensitive protein 1 antibody

Catalog: PHY7596S

## Product Information

<b>Description:</b>	Rabbit polyclonal antibody
<b>Background:</b>	COI1 is a protein containing Leu-rich repeats and a degenerate F-box motif. Associates with AtCUL1, AtRbx1, and the Skp1-like proteins ASK1 and ASK2 to assemble SCF COI1 ubiquitin-ligase complexes in planta. A single amino acid substitution in the F-box motif of COI1 abolishes the formation of the SCF(COI1) complexes and results in loss of the JA response. Required for wound- and jasmonates-induced transcriptional regulation. Amino acid mutations in COI1 distinctively affect jasmonate-regulated male fertility. CFA-Ile, CFA-Leu, CFA-Val, CFA-Met and CFA-Ala could not inhibit the root length and restoration of fertility in coi1-1 mutants.
<b>Synonyms:</b>	COI1, CORONATINE INSENSITIVE 1
<b>Immunogen:</b>	KLH-conjugated synthetic peptide (15 aa from Central section) derived from <i>Arabidopsis thaliana</i> COI1 (AT2G39940).
<b>Form:</b>	Lyophilized
<b>Quantity:</b>	150 µg
<b>Purification:</b>	Serum Peptide affinity form antibody available upon request at <a href="mailto:info@phytoab.com">info@phytoab.com</a> .
<b>Reconstitution:</b>	Reconstitution with 150 µl of sterile water. "Note: please spin tube briefly prior to opening it to avoid any losses that might occur from lyophilized material adhering to the cap or sides of the tube".
<b>Stability &amp; Storage:</b>	Use a manual defrost freezer and avoid repeated freeze-thaw cycles. 12 months from date of receipt, -20 to -70°C as supplied. 6 months, -20 to -70°C under sterile conditions after reconstitution. 1 month, 2 to 8°C under sterile conditions after reconstitution.
<b>Shipping:</b>	The product is shipped at 4°C. Upon receipt, store it immediately at the temperature recommended above.

## Application Information

<b>Recommended Dilution:</b>	Western Blot (1:1000-1:2000) Note: Optimal dilutions/concentrations should be determined by the
------------------------------	--

Research Use Only

**Expected / apparent MW:**

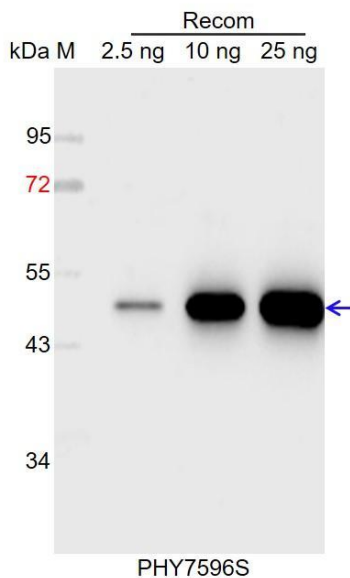
end user.  
68 kDa

**Predicted Reactivity:**

Among species analyzed, the sequence of the synthetic peptide used for immunization is 100% homologues with the sequence in *Brassica rapa*, *Brassica napus*, and 80-99% homologues with the sequence in *Cucumis sativus*, *Gossypium raimondii*, *Vitis vinifera*, *Glycine max*, *Solanum lycopersicum*, *Solanum tuberosum*.

For more species homologues information, please contact tech support at [tech@phytoab.com](mailto:tech@phytoab.com).

## Application Example



Recom: 2.5 ng, 10 ng and 25 ng recombinant protein containing the peptide for immunization and having a molecular mass of 52 kDa.

**Electrophoresis:** 12% SDS-PAGE

**Transfer:** blotting to NC (nitrocellulose) membrane for 1 h.

**Blocking:** 5% skim milk at RT or 4°C for 1 h.

**Primary antibody:** 1:1000 dilution overnight at 4°C.

**Secondary antibody:** 1:10000 dilution using Goat Anti-Rabbit IgG H&L (HRP) (Cat# PHY6000).

**Detection:** using chemiluminescence substrate and image were captured with CCD camera.