

# Anti-Cytochrome c oxidase subunit 3, N-terminal antibody

Catalog: PHY3159A

## Product Information

<b>Description:</b>	Rabbit polyclonal antibody
<b>Background:</b>	Cytochrome c oxidase is the last enzyme in the respiratory electron transport chain of mitochondria and it is also called Complex IV. Cytochrome c oxidase receives an electron from each of four cytochrome c molecules, and transfers them to one oxygen molecule, converting molecular oxygen to two molecules of water. In higher plants mitochondria, Complex IV processes 14 subunits. COX3 (ATMG00730) is one subunit of the Complex IV.
<b>Synonyms:</b>	COX3, CYTOCHROME C OXIDASE SUBUNIT 3
<b>Immunogen:</b>	KLH-conjugated synthetic peptide (16 aa from N terminal section) derived from <i>Arabidopsis thaliana</i> COX3 (ATMG00730, AT2G07687).
<b>Form:</b>	Lyophilized
<b>Quantity:</b>	150 µg
<b>Purification:</b>	Immunogen affinity purified
<b>Reconstitution:</b>	Reconstitution with 150 µl of sterile 1XPBS (PH=7.4). "Note: please spin tube briefly prior to opening it to avoid any losses that might occur from lyophilized material adhering to the cap or sides of the tube".
<b>Stability &amp; Storage:</b>	Use a manual defrost freezer and avoid repeated freeze-thaw cycles. 12 months from date of receipt, -20 to -70°C as supplied. 6 months, -20 to -70°C under sterile conditions after reconstitution. 1 month, 2 to 8°C under sterile conditions after reconstitution.
<b>Shipping:</b>	The product is shipped at 4°C. Upon receipt, store it immediately at the temperature recommended above.

## Application Information

<b>Recommended Dilution:</b>	Western Blot (1:1000-1:2000) Note: Optimal dilutions/concentrations should be determined by the end user.
<b>Expected / apparent MW:</b>	30 kDa

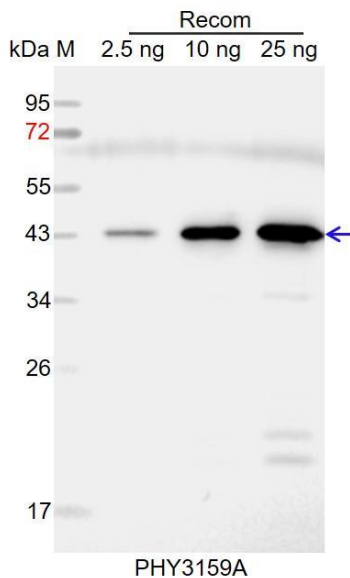
Research Use Only

**Predicted Reactivity:**

Among species analyzed, the sequence of the synthetic peptide used for immunization is 100% homologues with the sequence in *Gossypium raimondii*, *Medicago truncatula*, *Cucumis sativus*, *Glycine max*, *Spinacia oleracea*, *Brassica napus*, *Populus trichocarpa*, *Solanum tuberosum*, *Brassica rapa*, *Hordeum vulgare*, *Zea mays*, *Triticum aestivum*, *Panicum virgatum*, *Oryza sativa*, *Setaria viridis*, and 80-99% homologues with the sequence in *Vitis vinifera*, *Nicotiana tabacum*, *Solanum lycopersicum*.

For more species homologues information, please contact tech support at [tech@phytoab.com](mailto:tech@phytoab.com).

**Application Example**



Recom: 2.5 ng, 10 ng and 25 ng recombinant protein containing the peptide for immunization and having a molecular mass of 43 kDa.

**Electrophoresis:** 12% SDS-PAGE

**Transfer:** blotting to NC (nitrocellulose) membrane for 1 h.

**Blocking:** 5% skim milk at RT or 4°C for 1 h.

**Primary antibody:** 1:1000 dilution overnight at 4°C.

**Secondary antibody:** 1:10000 dilution using Goat Anti-Rabbit IgG H&L (HRP) (Cat# PHY6000).

**Detection:** using chemiluminescence substrate and image were captured with CCD camera.