

Anti-Abscisic acid receptor PYL3, C-terminal antibody

Catalog: PHY3454A

Product Information

Description:	Rabbit polyclonal antibody
Background:	PYL3 encodes a member of the PYR (pyrabactin resistance)/PYL(PYR1-like)/RCAR (regulatory components of ABA receptor) family proteins with 14 members. PYR/PYL/RCAR family proteins function as abscisic acid sensors. Mediate ABA-dependent regulation of protein phosphatase 2Cs ABI1 and ABI2.
Synonyms:	PYL3, PYR1-LIKE 3, RCAR13, REGULATORY COMPONENTS OF ABA RECEPTOR 13
Immunogen:	KLH-conjugated synthetic peptide (13 aa from C terminal section) derived from <i>Arabidopsis thaliana</i> PYL3 (AT1G73000).
Form:	Lyophilized
Quantity:	150 µg
Purification:	Immunogen affinity purified
Reconstitution:	Reconstitution with 150 µl of sterile 1XPBS (PH=7.4). "Note: please spin tube briefly prior to opening it to avoid any losses that might occur from lyophilized material adhering to the cap or sides of the tube".
Stability & Storage:	Use a manual defrost freezer and avoid repeated freeze-thaw cycles. 12 months from date of receipt, -20 to -70°C as supplied. 6 months, -20 to -70°C under sterile conditions after reconstitution. 1 month, 2 to 8°C under sterile conditions after reconstitution.
Shipping:	The product is shipped at 4°C. Upon receipt, store it immediately at the temperature recommended above.

Application Information

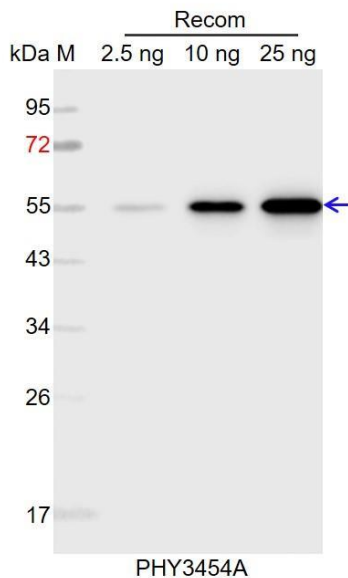
Recommended Dilution:	Western Blot (1:1000-1:2000) Note: Optimal dilutions/concentrations should be determined by the end user.
Expected / apparent MW:	23 kDa
Predicted Reactivity:	Among species analyzed, the sequence of the synthetic peptide used for immunization is 80-99% homologues with the sequence in <i>Spinacia</i>

Research Use Only

oleracea, Brassica napus, Brassica rapa, Oryza sativa, Setaria viridis, Sorghum bicolor, Panicum virgatum, Triticum aestivum, Hordeum vulgare, Gossypium raimondii, Glycine max, Medicago truncatula, Nicotiana tabacum, Zea mays, Solanum tuberosum.

For more species homologues information, please contact tech support at tech@phytoab.com.

Application Example



Recom: 2.5 ng, 10 ng and 25 ng recombinant protein containing the peptide for immunization and having a molecular mass of 55 kDa.

Electrophoresis: 12% SDS-PAGE

Transfer: blotting to NC (nitrocellulose) membrane for 1 h.

Blocking: 5% skim milk at RT or 4°C for 1 h.

Primary antibody: 1:1000 dilution overnight at 4°C.

Secondary antibody: 1:10000 dilution using Goat Anti-Rabbit IgG H&L (HRP) (Cat# PHY6000).

Detection: using chemiluminescence substrate and image were captured with CCD camera.