

Anti-Serine/threonine-protein phosphatase BSU1, C-terminal antibody

Catalog: PHY1985A

Product Information

Description:	Rabbit polyclonal antibody
Background:	The phytohormone Brassinosteroid (BR) plays essential roles in multiple developmental processes. BR is perceived by the receptor kinase BRI1 at the cell surface, and downstream BR signal transduction involves a receptor-like kinase (BAK1), a GSK3-like kinase (BIN2), a phosphatase (BSU1), and transcription factors (BZR1 and BZR2/BES1). BSU1 acts as a positive regulator of brassinosteroid (BR) signaling.
Synonyms:	BSU1, BRI1 SUPPRESSOR 1
Immunogen:	KLH-conjugated synthetic peptide (18 aa from C terminal section) derived from <i>Arabidopsis thaliana</i> BSU1 (AT1G03445).
Form:	Lyophilized
Quantity:	150 µg
Purification:	Immunogen affinity purified
Reconstitution:	Reconstitution with 150 µl of sterile 1XPBS (PH=7.4). "Note: please spin tube briefly prior to opening it to avoid any losses that might occur from lyophilized material adhering to the cap or sides of the tube".
Stability & Storage:	Use a manual defrost freezer and avoid repeated freeze-thaw cycles. 12 months from date of receipt, -20 to -70°C as supplied. 6 months, -20 to -70°C under sterile conditions after reconstitution. 1 month, 2 to 8°C under sterile conditions after reconstitution.
Shipping:	The product is shipped at 4°C. Upon receipt, store it immediately at the temperature recommended above.

Application Information

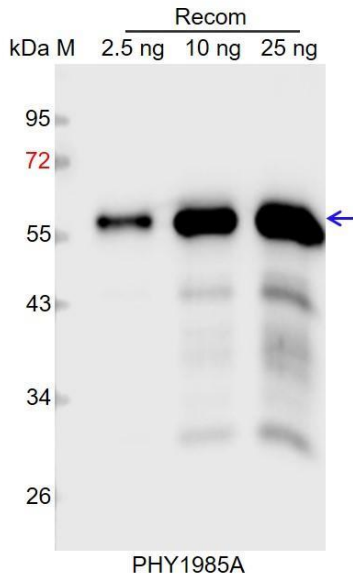
Recommended Dilution:	Western Blot (1:1000-1:2000) Note: Optimal dilutions/concentrations should be determined by the end user.
------------------------------	--

Research Use Only

Expected / apparent MW: 88 kDa

Predicted Reactivity: For more species homologues information, please contact tech support at tech@phytoab.com.

Application Example



Recom: 2.5 ng, 10 ng and 25 ng recombinant protein containing the peptide for immunization and having a molecular mass of 56 kDa.

Electrophoresis: 12% SDS-PAGE

Transfer: blotting to NC (nitrocellulose) membrane for 1 h.

Blocking: 5% skim milk at RT or 4°C for 1 h.

Primary antibody: 1:1000 dilution overnight at 4°C.

Secondary antibody: 1:10000 dilution using Goat Anti-Rabbit IgG H&L (HRP) (Cat# PHY6000).

Detection: using chemiluminescence substrate and image were captured with CCD camera.