

Anti-Indole-3-acetaldehyde oxidase antibody

Catalog: PHY1417A

Product Information

Description:	Rabbit polyclonal antibody
Background:	AAO2 is an aldehyde oxidase isoform, one of four Arabidopsis aldehyde oxidase genes (AAO1 (AT5G20960), AAO2(AT3G43600), AAO3(AT2G27150), and AAO4(AT1G04580)), is the most likely candidate for the enzyme, because it can efficiently catalyze the oxidation of abscisic aldehyde to ABA.
Synonyms:	AAO2, ALDEHYDE OXIDASE 2, ALDEHYDE OXIDASE 3, ALDEHYDE OXIDASE GAMMA, AO3, AOGAMMA, ARABIDOPSIS THALIANA ALDEHYDE OXIDASE 2, ARABIDOPSIS THALIANA ALDEHYDE OXIDASE 3, ATAO-2, ATAO3
Immunogen:	KLH-conjugated synthetic peptide (18 aa from Central section) derived from <i>Arabidopsis thaliana</i> AAO2 (AT3G43600).
Form:	Lyophilized
Quantity:	150 µg
Purification:	Immunogen affinity purified
Reconstitution:	Reconstitution with 150 µl of sterile 1XPBS (PH=7.4). "Note: please spin tube briefly prior to opening it to avoid any losses that might occur from lyophilized material adhering to the cap or sides of the tube".
Stability &	Use a manual defrost freezer and avoid repeated freeze-thaw cycles.
Storage:	12 months from date of receipt, -20 to -70°C as supplied. 6 months, -20 to -70°C under sterile conditions after reconstitution. 1 month, 2 to 8°C under sterile conditions after reconstitution.
Shipping:	The product is shipped at 4°C. Upon receipt, store it immediately at the temperature recommended above.

Application Information

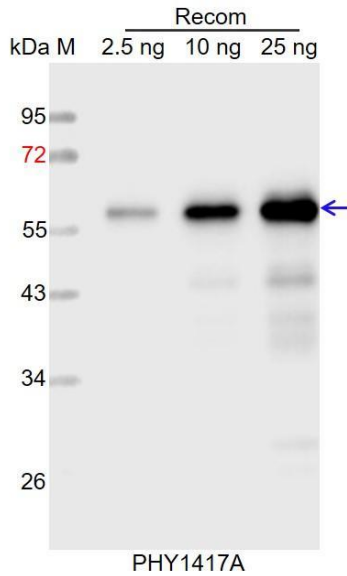
Recommended Dilution:	Western Blot (1:1000-1:2000) Note: Optimal dilutions/concentrations should be determined by the end user.
Expected / apparent MW:	145 kDa

Research Use Only

Predicted Reactivity:

For more species homologues information, please contact tech support at tech@phytoab.com.

Application Example



Recom: 2.5 ng, 10 ng and 25 ng recombinant protein containing the peptide for immunization and having a molecular mass of 58 kDa.

Electrophoresis: 12% SDS-PAGE

Transfer: blotting to NC (nitrocellulose) membrane for 1 h.

Blocking: 5% skim milk at RT or 4°C for 1 h.

Primary antibody: 1:1000 dilution overnight at 4°C.

Secondary antibody: 1:10000 dilution using Goat Anti-Rabbit IgG H&L (HRP) (Cat# PHY6000).

Detection: using chemiluminescence substrate and image were captured with CCD camera.