

## Anti-Papaya leaf curl virus (PaLCuV) Capsid protein-AV1 antibody

**Catalog:** NAV1004-001S

**Quantity:** 200 µL

### Immunogen Information:

#### Background

Papaya leaf curl virus (PaLCuV)

#### Immunogen

KLH-conjugated synthetic peptide (16 aa from Central section) derived from Capsid protein-AV1 (Uniprot: O56989 NCBI: NP\_689458) of Papaya leaf curl virus PaLCuV and coat protein (Uniprot: Q8QVH3 NCBI: NP\_598187) of Ageratum Enation Virus. [We also have antibodies for different epitopes from the Capsid protein. Please request at \[info@nanodiaincs.com\]\(mailto:info@nanodiaincs.com\) or <https://www.nanodiaincs.com>.](#)

### Basic Information:

**Purification:** Serum

Peptide affinity form antibody available upon request at [info@nanodiaincs.com](mailto:info@nanodiaincs.com).

**Clonality:** Polyclonal      **Expected MW:** 30 kDa      **Host:** Rabbit

### Product Information:

**Form:** Lyophilized

#### Reconstitution

Reconstitution with 200 µL of sterile water.

"Note: please spin tube briefly prior to opening it to avoid any losses that might occur from lyophilized material adhering to the cap or sides of the tube".

#### Stability & Storage

Use a manual defrost freezer and avoid repeated freeze-thaw cycles.

12 months from date of receipt, -20 to -70°C as supplied.

6 months, -20 to -70°C under sterile conditions after reconstitution.

1 month, 2 to 8°C under sterile conditions after reconstitution.

#### Shipping

The product is shipped at 4°C. Upon receipt, store it immediately at the temperature recommended above.

### Applications Information:

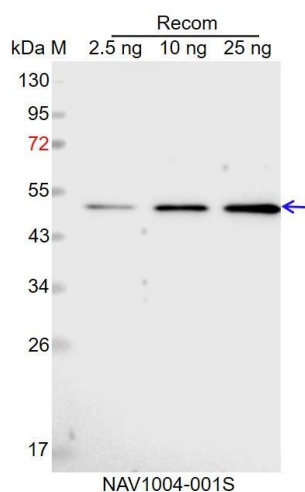
**Recommended Dilution:** WB (1:1000-1:2000)

**Predicted Reactivity:** Among species analyzed, the sequence of the synthetic peptide used for immunization is 100% homologues with the sequence in Croton yellow vein mosaic virus, Cotton leaf curl virus, Tomato leaf curl virus, Sunn hemp leaf distortion virus, Chilli leaf curl virus, Malvastrum yellow vein virus, Senna leaf curl virus, Rose leaf curl virus, Euphorbia leaf curl virus, Tobacco leaf curl virus, Hollyhock yellow

vein virus, Tobacco curly shoot virus, Papaya leaf crumple virus, Pedilanthus leaf curl virus, Ageratum enation virus, Papaya mottle leaf curl virus, Pepper leaf curl virus, Citharexylum leaf curl virus.

For more species homologues information, please contact tech support at [info@nanodiaincs.com](mailto:info@nanodiaincs.com).

## Example



Recom: 2.5 ng, 10 ng and 25 ng recombinant protein

containing the peptide for immunization and having a molecular mass of 52 kDa.

**Electrophoresis:** 12% SDS-PAGE

**Transfer:** blotting to NC (nitrocellulose) membrane for 1 h.

**Blocking:** 5% skim milk at RT or 4°C for 1 h.

**Primary antibody:** 1:1000 dilution overnight at 4°C.

**Secondary antibody:** 1:10000 dilution using Goat Anti-Rabbit IgG H&L (HRP) (Cat# PHY6000).

**Detection:** using chemiluminescence substrate and image were captured with CCD camera.