

Anti-Mediator of RNA polymerase II transcription subunit 25, antibody

Catalog: PHY3714A

Product Information

Description:	Rabbit polyclonal antibody
Background:	PFT1 is a nuclear protein that acts in a phyB pathway (but downstream of phyB) and induces flowering in response to suboptimal light conditions. PFT1 promotes flowering in CO dependent and independent pathways and integrates several environmental stimuli, such as light quality and JA-dependent defenses.
Synonyms:	PFT1, GLH1, MED25, MEDIATOR 25, PHYTOCHROME AND FLOWERING TIME 1
Immunogen:	KLH-conjugated synthetic peptide (18 aa from Central section) derived from <i>Arabidopsis thaliana</i> PFT1 (AT1G25540).
Form:	Lyophilized
Quantity:	150 µg
Purification:	Immunogen affinity purified
Reconstitution:	Reconstitution with 150 µl of 0.01 M sterile PBS. "Note: please spin tube briefly prior to opening it to avoid any losses that might occur from lyophilized material adhering to the cap or sides of the tube".
Stability &	Use a manual defrost freezer and avoid repeated freeze-thaw cycles.
Storage:	12 months from date of receipt, -20 to -70°C as supplied. 6 months, -20 to -70°C under sterile conditions after reconstitution. 1 month, 2 to 8°C under sterile conditions after reconstitution.
Shipping:	The product is shipped at 4°C. Upon receipt, store it immediately at the temperature recommended above.

Application Information

Recommended Dilution:	Western Blot (1:1000-1:2000), ChIP-seq Note: Optimal dilutions/concentrations should be determined by the end user.
Expected / apparent MW:	90 kDa

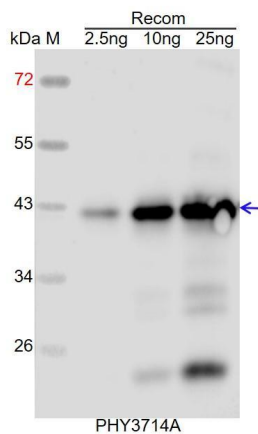
Research Use Only

Predicted Reactivity:

Among species analyzed, the sequence of the synthetic peptide used for immunization is 100% homologues with the sequence in *Brassica rapa*, *Brassica napus*, and 80-99% homologues with the sequence in *Populus trichocarpa*, *Cucumis sativus*, *Gossypium raimondii*, *Vitis vinifera*, *Spinacia oleracea*, *Solanum tuberosum*, *Nicotiana tabacum*, *Solanum lycopersicum*, *Glycine max*, *Medicago truncatula*.

For more species homologues information, please contact tech support at tech@phytoab.com.

Application Example



Recom: 2.5 ng, 10 ng and 25 ng recombinant protein containing the peptide for immunization and having a molecular mass of 42 kDa.

Electrophoresis: 12% SDS-PAGE

Transfer: blotting to NC (nitrocellulose) membrane for 1 h.

Blocking: 5% skim milk at RT or 4°C for 1 h.

Primary antibody: 1:1000 dilution overnight at 4°C.

Secondary antibody: 1:10000 dilution using Goat Anti-Rabbit IgG H&L (HRP) (Cat# PHY6000).

Detection: using chemiluminescence substrate and image were captured with CCD camera.