

Anti-Two pore calcium channel protein 1, C-terminal antibody

Catalog: PHY3129A

Product Information

Description:	Rabbit polyclonal antibody
Background:	TPC1 is involved in a depolarization-activated Ca(2+) channel. Anti-sense experiments with TPC1 as well as Sucrose-H(+) symporters and complementation of yeast sucrose uptake mutant cch1 suggest that this protein mediates a voltage-activated Ca(2+) influx. Mutants lack detectable SV channel activity suggesting TPC1 is essential component of the SV channel. Patch clamp analysis of loss of function mutation indicates TPC1 does not affect Ca2+ signaling in response to abiotic and biotic stress.
Synonyms:	TPC1, ATCCH1, ATTPC1, CALCIUM CHANNEL 1, FATTY ACID OXYGENATION UPREGULATED 2, FOU2, TWO-PORE CHANNEL 1
Immunogen:	KLH-conjugated synthetic peptide (17 aa from C terminal section) derived from <i>Arabidopsis thaliana</i> TPC1 (AT4G03560).
Form:	Lyophilized
Quantity:	150 µg
Purification:	Immunogen affinity purified
Reconstitution:	Reconstitution with 150 µl of sterile 1XPBS (PH=7.4). "Note: please spin tube briefly prior to opening it to avoid any losses that might occur from lyophilized material adhering to the cap or sides of the tube".
Stability & Storage:	Use a manual defrost freezer and avoid repeated freeze-thaw cycles. 12 months from date of receipt, -20 to -70°C as supplied. 6 months, -20 to -70°C under sterile conditions after reconstitution. 1 month, 2 to 8°C under sterile conditions after reconstitution.
Shipping:	The product is shipped at 4°C. Upon receipt, store it immediately at the temperature recommended above.

Application Information

Recommended Dilution:	Western Blot (1:1000-1:2000) Note: Optimal dilutions/concentrations should be determined by the end user.
------------------------------	--

Research Use Only

Expected / apparent MW:

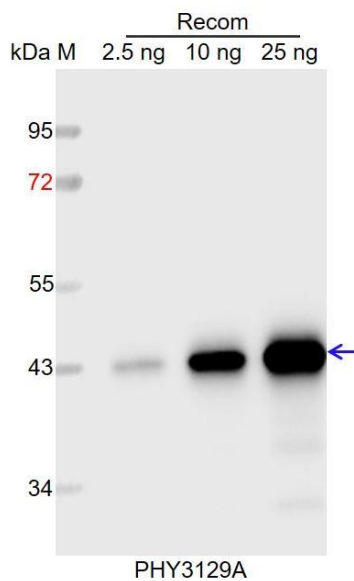
85 kDa

Predicted Reactivity:

Among species analyzed, the sequence of the synthetic peptide used for immunization is 100% homologues with the sequence in *Brassica rapa*, *Brassica napus*.

For more species homologues information, please contact tech support at tech@phytoab.com.

Application Example



Recom: 2.5 ng, 10 ng and 25 ng recombinant protein containing the peptide for immunization and having a molecular mass of 43 kDa.

Electrophoresis: 12% SDS-PAGE

Transfer: blotting to NC (nitrocellulose) membrane for 1 h.

Blocking: 5% skim milk at RT or 4°C for 1 h.

Primary antibody: 1:1000 dilution overnight at 4°C.

Secondary antibody: 1:10000 dilution using Goat Anti-Rabbit IgG H&L (HRP) (Cat# PHY6000).

Detection: using chemiluminescence substrate and image were captured with CCD camera.