

# Anti-NAD(P)H-quinone oxidoreductase subunit 2, chloroplastic, C-terminal antibody

Catalog: PHY3146A

## Product Information

<b>Description:</b>	Rabbit polyclonal antibody
<b>Background:</b>	NDH shuttles electrons from NAD(P)H: plastoquinone, via FMN and iron-sulfur (Fe-S) centers, to quinones in the photosynthetic chain and possibly in a chloroplast respiratory chain. It is the immediate electron acceptor for the enzyme in this species is believed to be plastoquinone. And it couples the redox reaction to proton translocation, and thus conserves the redox energy in a proton gradient.
<b>Synonyms:</b>	NDHB
<b>Immunogen:</b>	KLH-conjugated synthetic peptide (15 aa from C terminal section) derived from <i>Arabidopsis thaliana</i> NDHB.1 (ATCG00890) and NDHB.2 (ATCG01250).
<b>Form:</b>	Lyophilized
<b>Quantity:</b>	150 µg
<b>Purification:</b>	Immunogen affinity purified
<b>Reconstitution:</b>	Reconstitution with 150 µl of sterile 1XPBS (PH=7.4). "Note: please spin tube briefly prior to opening it to avoid any losses that might occur from lyophilized material adhering to the cap or sides of the tube".
<b>Stability &amp;</b>	Use a manual defrost freezer and avoid repeated freeze-thaw cycles.
<b>Storage:</b>	12 months from date of receipt, -20 to -70°C as supplied. 6 months, -20 to -70°C under sterile conditions after reconstitution. 1 month, 2 to 8°C under sterile conditions after reconstitution.
<b>Shipping:</b>	The product is shipped at 4°C. Upon receipt, store it immediately at the temperature recommended above.

## Application Information

<b>Recommended Dilution:</b>	Western Blot (1:1000-1:2000) Note: Optimal dilutions/concentrations should be determined by the end user.
<b>Expected / apparent MW:</b>	42 kDa

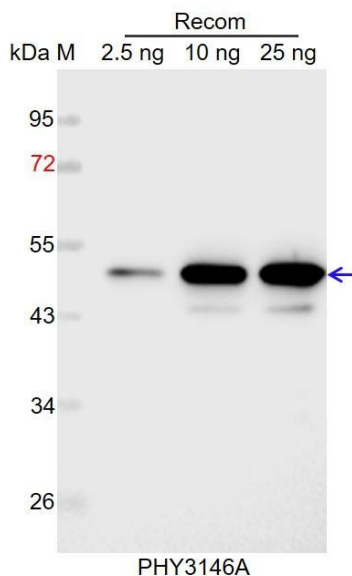
Research Use Only

### Predicted Reactivity:

Among species analyzed, the sequence of the synthetic peptide used for immunization is 80-99% homologues with the sequence in *Glycine max*, *Medicago truncatula*, *Brassica rapa*, *Cucumis sativus*, *Gossypium raimondii*, *Brassica napus*, *Solanum lycopersicum*, *Nicotiana tabacum*, *Spinacia oleracea*, *Solanum tuberosum*, *Vitis vinifera*, *Populus trichocarpa*, *Triticum aestivum*, *Hordeum vulgare*, *Oryza sativa*, *Zea mays*, *Leymus chinensis*, *Setaria viridis*, *Sorghum bicolor*.

For more species homologues information, please contact tech support at [tech@phytoab.com](mailto:tech@phytoab.com).

### Application Example



Recom: 2.5 ng, 10 ng and 25 ng recombinant protein containing the peptide for immunization and having a molecular mass of 50 kDa.

**Electrophoresis:** 12% SDS-PAGE

**Transfer:** blotting to NC (nitrocellulose) membrane for 1 h.

**Blocking:** 5% skim milk at RT or 4°C for 1 h.

**Primary antibody:** 1:1000 dilution overnight at 4°C.

**Secondary antibody:** 1:10000 dilution using Goat Anti-Rabbit IgG H&L (HRP) (Cat# PHY6000).

**Detection:** using chemiluminescence substrate and image were captured with CCD camera.