

Anti-RNA polymerase subunit beta antibody

Catalog: PHY1700

Product Information

Description:	Mouse monoclonal (Clone: 13H06) antibody
Background:	In chloroplasts, transcription of plastid genes is mediated by two types of RNA polymerase: plastid-encoded RNA polymerase (PEP) and nuclear encoded RNA polymerase (NEP). PEP is composed of four core subunits (α , β , β' , β'') and a promoter recognition subunit (σ factor). RpoB (ATCG00190) is the β subunit of PEP.
Synonyms:	RpoB, RNA POLYMERASE SUBUNIT BETA
Immunogen:	Recombinant protein (537-1072 aa) derived from <i>Arabidopsis thaliana</i> RpoB (ATCG00190).
Form:	Lyophilized
Quantity:	150 μ g
Purification:	Protein A purified
Reconstitution:	Reconstitution with 150 μ l of sterile 1XPBS (PH=7.4). "Note: please spin tube briefly prior to opening it to avoid any losses that might occur from lyophilized material adhering to the cap or sides of the tube".
Stability & Storage:	Use a manual defrost freezer and avoid repeated freeze-thaw cycles. 12 months from date of receipt, -20 to -70 $^{\circ}$ C as supplied. 6 months, -20 to -70 $^{\circ}$ C under sterile conditions after reconstitution. 1 month, 2 to 8 $^{\circ}$ C under sterile conditions after reconstitution.
Shipping:	The product is shipped at 4 $^{\circ}$ C. Upon receipt, store it immediately at the temperature recommended above.

Application Information

Recommended Dilution:	Western Blot (1:1000-1:2000) Note: Optimal dilutions/concentrations should be determined by the end user.
Expected / apparent MW:	121 kDa
Confirmed Reactivity:	<i>Arabidopsis thaliana</i>
Predicted Reactivity:	For more species homologues information, please contact tech support at tech@phytoab.com .

Research Use Only

Application Example

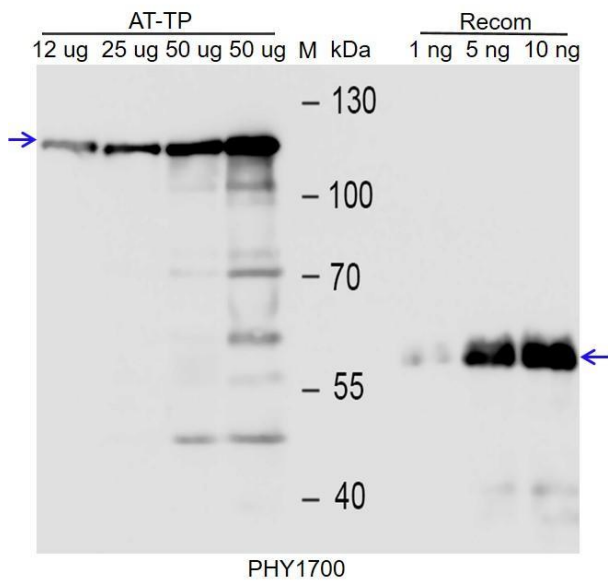


image were captured with CCD camera.

AT-TP: 12 µg, 25 µg, 50 µg and 50 µg total protein from *Arabidopsis thaliana*.

Recom: 1 ng, 5 ng and 10 ng recombinant protein containing the peptide for immunization and having a molecular mass of 60 kDa.

Electrophoresis: 8% SDS-PAGE

Transfer: blotting to NC (nitrocellulose) membrane for 1 h.

Blocking: 5% skim milk at RT or 4°C for 1 h.

Primary antibody: 1:1000 dilution overnight at 4°C.

Secondary antibody: 1:10000 dilution using Goat Anti-Rabbit IgG H&L (HRP) (Cat# PHY6000).

Detection: using chemiluminescence substrate and