

Anti-Potassium channel AKT1 antibody

Catalog: PHY0195S

Product Information

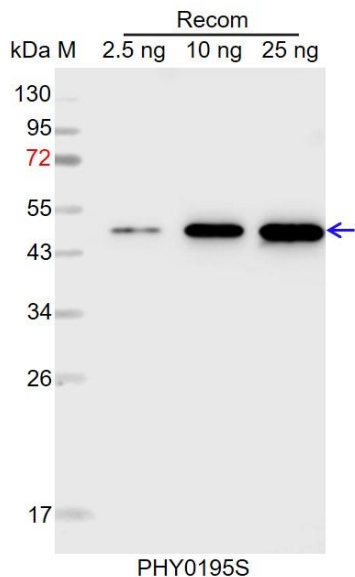
| | |
|------------------------|--|
| Description: | Rabbit polyclonal antibody |
| Background: | In Arabidopsis, the Shaker family comprises nine members, which can be segregated into five phylogenetic groups. Group I (KAT1 (AT5G46240) and KAT2 (AT4G18290)), group II (AKT1 (AT2G26650) and AKT5 (AT4G32500)) and group III (AKT2 (AT4G22200)) can produce homotetrameric hyperpolarization-activated K ⁺ channels when expressed alone in heterologous expression systems. In the same conditions, group V (GORK (AT5G37500), and SKOR (AT3G02850)) can produce homotetrameric depolarization-activated K ⁺ channels. AtKC1, the single member of group IV in Arabidopsis, contributes to the inward K ⁺ conductance, probably in association with AKT1 within hetero-meric channels. |
| Synonyms: | AKT1, ATAKT1, K ⁺ TRANSPORTER 1, KT1 |
| Immunogen: | KLH-conjugated synthetic peptide (17 aa from C terminal section) derived from <i>Arabidopsis thaliana</i> AKT1 (AT2G26650). |
| Form: | Lyophilized |
| Quantity: | 150 µg |
| Purification: | Serum Peptide affinity form antibody available upon request at info@phytoab.com . |
| Reconstitution: | Reconstitution with 150 µl of sterile water. "Note: please spin tube briefly prior to opening it to avoid any losses that might occur from lyophilized material adhering to the cap or sides of the tube". |
| Stability & | Use a manual defrost freezer and avoid repeated freeze-thaw cycles. |
| Storage: | 12 months from date of receipt, -20 to -70°C as supplied. 6 months, -20 to -70°C under sterile conditions after reconstitution. 1 month, 2 to 8°C under sterile conditions after reconstitution. |
| Shipping: | The product is shipped at 4°C. Upon receipt, store it immediately at the temperature recommended above. |

Research Use Only

Application Information

| | |
|------------------------------|--|
| Recommended Dilution: | Western Blot (1:1000-1:2000) Note: Optimal dilutions/concentrations should be determined by the end user. |
| Expected/apparent MW: | 97 kDa |
| Predicted Reactivity: | Among species analyzed, the sequence of the synthetic peptide used for immunization is 80-99% homologues with the sequence in <i>Brassica napus</i> , <i>Brassica rapa</i> . For more species homologues information, please contact tech support at tech@phytoab.com . |

Application Example



Recom: 2.5 ng, 10 ng and 25 ng recombinant protein containing the peptide for immunization and having a molecular mass of 47 kDa.

Electrophoresis: 12% SDS-PAGE

Transfer: blotting to NC (nitrocellulose) membrane for 1 h.

Blocking: 5% skim milk at RT or 4°C for 1 h.

Primary antibody: 1:1000 dilution overnight at 4°C.

Secondary antibody: 1:10000 dilution using Goat Anti-Rabbit IgG H&L (HRP) (Cat# PHY6000).

Detection: using chemiluminescence substrate and image were captured with CCD camera.