

Anti-Chlorophyll a-b binding protein, chloroplastic, N-terminal antibody

Catalog: PHY5636S

Product Information

Description:	Rabbit polyclonal antibody
Background:	LHCBM
Synonyms:	LHCBM
Immunogen:	KLH-conjugated synthetic peptide (16 aa from N terminal section) derived from <i>Chlamydomonas reinhardtii</i> LHCBM6 (Cre06.g285250), LHCBM3 (Cre04.g232104), LHCBM1 (Cre01.g066917), LHCBM8(Cre06.g284250), LHCBM9 (Cre06.g284200), LHCBM4 (Cre06.g283950), LHCBM2 (Cre12.g548400) and LHCBM7 (Cre12.g548950).
Form:	Lyophilized
Quantity:	150 µg
Purification:	Serum Peptide affinity form antibody available upon request at info@phytoab.com .
Reconstitution:	Reconstitution with 150 µl of sterile water. "Note: please spin tube briefly prior to opening it to avoid any losses that might occur from lyophilized material adhering to the cap or sides of the tube".
Stability & Storage:	Use a manual defrost freezer and avoid repeated freeze-thaw cycles. 12 months from date of receipt, -20 to -70°C as supplied. 6 months, -20 to -70°C under sterile conditions after reconstitution. 1 month, 2 to 8°C under sterile conditions after reconstitution.
Shipping:	The product is shipped at 4°C. Upon receipt, store it immediately at the temperature recommended above.

Application Information

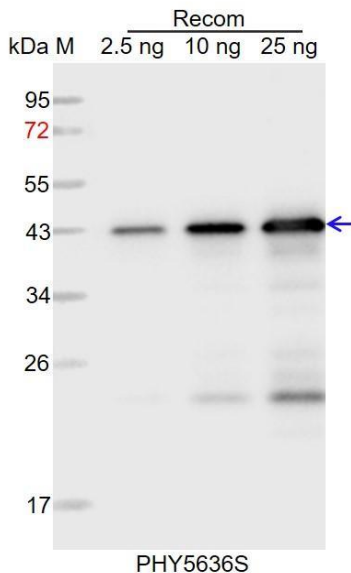
Recommended Dilution:	Western Blot (1:1000-1:2000) Note: Optimal dilutions/concentrations should be determined by the end user.
Expected / apparent MW:	27 kDa
Predicted Reactivity:	Among species analyzed, the sequence of the synthetic peptide used for immunization is 80-99% homologues with the sequence in

Research Use Only

Brassica napus, Solanum tuberosum, Brassica rapa, Arabidopsis thaliana, Solanum lycopersicum, Medicago truncatula, Nicotiana tabacum, Glycine max, Gossypium raimondii, Spinacia oleracea, Oryza sativa, Panicum virgatum, Sorghum bicolor, Setaria viridis, Zea mays.

The sequence of the synthetic peptide used for immunization is 94% (15/16) homologues with the sequence in LHCBM5(Cre03.g156900). For more species homologues information, please contact tech support at tech@phytoab.com.

Application Example



Recom: 2.5 ng, 10 ng and 25 ng recombinant protein containing the peptide for immunization and having a molecular mass of 43 kDa.

Electrophoresis: 12% SDS-PAGE

Transfer: blotting to NC (nitrocellulose) membrane for 1 h.

Blocking: 5% skim milk at RT or 4°C for 1 h.

Primary antibody: 1:1000 dilution overnight at 4°C.

Secondary antibody: 1:10000 dilution using Goat Anti-Rabbit IgG H&L (HRP) (Cat# PHY6000).

Detection: using chemiluminescence substrate and image were captured with CCD camera.