

Anti-Tubulin alpha chain antibody

Catalog: PHY7543S

Product Information

Description:	Rabbit polyclonal antibody
Background:	Tubulin in molecular biology can refer either to the tubulin protein superfamily of globular proteins, or one of the member proteins of that superfamily. The tubulin superfamily contains six families of tubulins (alpha-, beta-, gamma-, delta-, epsilon and zeta-tubulins). Tubulin alpha (TUA) together with beta tubulin is making up microtubules.
Synonyms:	TUA1/2/3/4/5/6
Immunogen:	KLH-conjugated synthetic peptide (19 aa from N terminal section) derived from <i>Arabidopsis thaliana</i> TUA1 (AT1G64740), TUB2 (AT1G50010), TUB3 (AT5G19770), TUB4 (AT1G04820), TUB5 (AT5G19780) and TUB6 (AT4G14960).
Form:	Lyophilized
Quantity:	150 µg
Purification:	Serum Peptide affinity form antibody available upon request at info@phytoab.com .
Reconstitution:	Reconstitution with 150 µl of sterile water. "Note: please spin tube briefly prior to opening it to avoid any losses that might occur from lyophilized material adhering to the cap or sides of the tube".
Stability & Storage:	Use a manual defrost freezer and avoid repeated freeze-thaw cycles. 12 months from date of receipt, -20 to -70°C as supplied. 6 months, -20 to -70°C under sterile conditions after reconstitution. 1 month, 2 to 8°C under sterile conditions after reconstitution.
Shipping:	The product is shipped at 4°C. Upon receipt, store it immediately at the temperature recommended above.

Application Information

Recommended Dilution:	Western Blot (1:1000-1:4000); IL Note: Optimal dilutions/concentrations should be determined by the end user.
Expected / apparent MW:	50 kDa

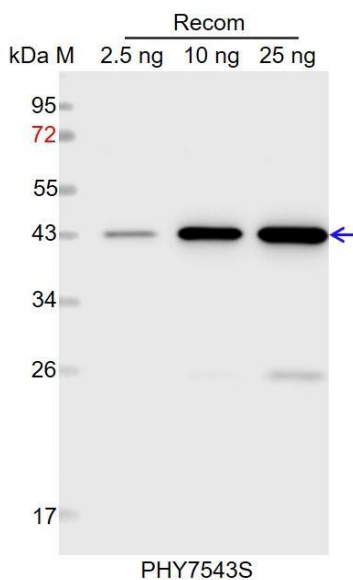
Research Use Only

Predicted Reactivity:

Among species analyzed, the sequence of the synthetic peptide used for immunization is 100% homologues with the sequence in *Spinacia oleracea*, *Brassica napus*, *Glycine max*, *Brassica rapa*, *Cucumis sativus*, *Vitis vinifera*, *Solanum tuberosum*, *Chlamydomonas reinhardtii*, *Setaria viridis*, *Nicotiana tabacum*, *Panicum virgatum*, *Populus trichocarpa*, *Medicago truncatula*, *Zea mays*, *Triticum aestivum*, *Gossypium raimondii*, *Sorghum bicolor*, *Solanum lycopersicum*.

For more species homologues information, please contact tech support at tech@phytoab.com.

Application Example



Recom: 2.5 ng, 10 ng and 25 ng recombinant protein containing the peptide for immunization and having a molecular mass of 43 kDa.

Electrophoresis: 12% SDS-PAGE

Transfer: blotting to NC (nitrocellulose) membrane for 1 h.

Blocking: 5% skim milk at RT or 4°C for 1 h.

Primary antibody: 1:1000 dilution overnight at 4°C.

Secondary antibody: 1:10000 dilution using Goat Anti-Rabbit IgG H&L (HRP) (Cat# PHY6000).

Detection: using chemiluminescence substrate and image were captured with CCD camera.