

Anti-mitogen-activated protein kinase kinase kinase antibody

Catalog: PHY4057S

Product Information

Description:	Rabbit polyclonal antibody
Background:	Similar to YDA. (Os04t0559800-01)
Synonyms:	Os04g0559800, SMG2, OsMKKK10
Immunogen:	KLH-conjugated synthetic peptide (15 aa from N terminal section) derived from <i>Oryza sativa</i> Os04g0559800.
Form:	Lyophilized
Quantity:	150 µg
Purification:	Serum Peptide affinity form antibody available upon request at info@phytoab.com .
Reconstitution:	Reconstitution with 150 µl of sterile water. "Note: please spin tube briefly prior to opening it to avoid any losses that might occur from lyophilized material adhering to the cap or sides of the tube".
Stability &	Use a manual defrost freezer and avoid repeated freeze-thaw cycles.
Storage:	12 months from date of receipt, -20 to -70°C as supplied. 6 months, -20 to -70°C under sterile conditions after reconstitution. 1 month, 2 to 8°C under sterile conditions after reconstitution.
Shipping:	The product is shipped at 4°C. Upon receipt, store it immediately at the temperature recommended above.

Application Information

Recommended Dilution:	Western Blot (1:100-1:500) Note: Optimal dilutions/concentrations should be determined by the end user.
Expected / apparent MW:	97 kDa
Confirmed Reactivity:	<i>Oryza sativa</i>
Predicted Reactivity:	Among species analyzed, the sequence of the synthetic peptide used for immunization is 80-99% homologues with the sequence in <i>Hordeum vulgare</i> , <i>Triticum aestivum</i> , <i>Setaria viridis</i> , <i>Zea mays</i> ,

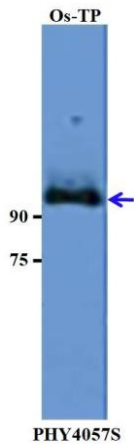
Research Use Only

Panicum virgatum, *Sorghum bicolor*.

For more species homologues information, please contact tech support at tech@phytoab.com.

Application Example

Example 1



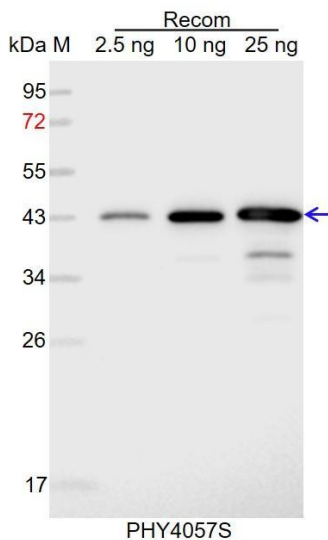
Os-TP: total protein from *Oryza sativa*.

Primary antibody: 1:500 dilution overnight at 4°C.

Secondary antibody: 1:10000 dilution using Goat Anti-Rabbit IgG H&L(HRP) (Cat# PHY6000).

Detection: using chemiluminescence substrate and image were captured with CCD camera.

Example 2



Recom: 2.5 ng, 10 ng and 25 ng recombinant protein containing the peptide for immunization and having a molecular mass of 43 kDa.

Electrophoresis: 12% SDS-PAGE

Transfer: blotting to NC (nitrocellulose) membrane for 1 h.

Blocking: 5% skim milk at RT or 4°C for 1 h.

Primary antibody: 1:1000 dilution overnight at 4°C.

Secondary antibody: 1:10000 dilution using Goat Anti-Rabbit IgG H&L (HRP) (Cat# PHY6000).

Detection: using chemiluminescence substrate and image were captured with CCD camera.