

Anti-Topless-related protein 1 antibody

Catalog: PHY3542A

Product Information

Description:	Rabbit polyclonal antibody
Background:	TPR1 is a protein with a Lissen-cephaly type-1-like homology (LisH) domain at the N terminus, a C-terminal to LisH (CTLH) domain, and 12 WD (tryptophan-aspartic acid)-40 repeats at the C terminus. It is closely related to Topless (TPL), which mediates auxin-dependent transcriptional repression during embryogenesis.
Synonyms:	TPR1, TOPLESS-RELATED 1
Immunogen:	KLH-conjugated synthetic peptide (15 aa from N terminal section) derived from <i>Arabidopsis thaliana</i> TPR1 (AT1G80490).
Form:	Lyophilized
Quantity:	150 µg
Purification:	Immunogen affinity purified
Reconstitution:	Reconstitution with 150 µl of sterile 1XPBS (PH=7.4). "Note: please spin tube briefly prior to opening it to avoid any losses that might occur from lyophilized material adhering to the cap or sides of the tube".
Stability & Storage:	Use a manual defrost freezer and avoid repeated freeze-thaw cycles. 12 months from date of receipt, -20 to -70°C as supplied. 6 months, -20 to -70°C under sterile conditions after reconstitution. 1 month, 2 to 8°C under sterile conditions after reconstitution.
Shipping:	The product is shipped at 4°C. Upon receipt, store it immediately at the temperature recommended above.

Application Information

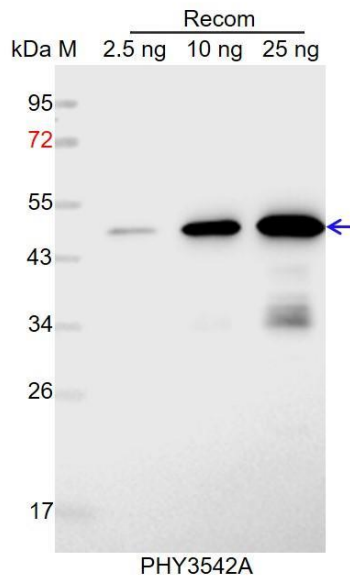
Recommended Dilution:	Western Blot (1:1000-1:2000) Note: Optimal dilutions/concentrations should be determined by the end user.
Expected / apparent MW:	124 kDa
Predicted Reactivity:	Among species analyzed, the sequence of the synthetic peptide used for immunization is 80-99% homologues with the sequence in <i>Glycine max</i> , <i>Gossypium raimondii</i> , <i>Medicago truncatula</i> , <i>Brassica</i>

Research Use Only

napus, Populus trichocarpa, Brassica rapa, Oryza sativa, Hordeum vulgare, Triticum aestivum, Setaria viridis, Panicum virgatum, Vitis vinifera, Zea mays, Sorghum bicolor.

For more species homologues information, please contact tech support at tech@phytoab.com.

Application Example



Recom: 2.5 ng, 10 ng and 25 ng recombinant protein containing the peptide for immunization and having a molecular mass of 47 kDa.

Electrophoresis: 12% SDS-PAGE

Transfer: blotting to NC (nitrocellulose) membrane for 1 h.

Blocking: 5% skim milk at RT or 4°C for 1 h.

Primary antibody: 1:1000 dilution overnight at 4°C.

Secondary antibody: 1:10000 dilution using Goat Anti-Rabbit IgG H&L (HRP) (Cat# PHY6000).

Detection: using chemiluminescence substrate and image were captured with CCD camera.