

Anti-Probable UDP-N-acetylglucosamine--peptide N-acetylglucosaminyltransferase SEC antibody

Catalog: PHY1982A

Product Information

Description:	Rabbit polyclonal antibody
Background:	Arabidopsis has two O-GlcNAc transferases (OGTs), SPINDLY (SPY) and SECRET AGENT (SEC). Both enzymes have a domain structure like that of the animal OGTs. OGT activity is required during embryogenesis as loss of both SPY and SEC function results in embryo lethality. In addition to roles in embryogenesis, SPY and SEC have both overlapping and unique roles throughout the life of the plant.
Synonyms:	SEC, SECRET AGENT
Immunogen:	KLH-conjugated synthetic peptide (16 aa from N terminal section) derived from <i>Arabidopsis thaliana</i> SEC (AT3G04240).
Form:	Lyophilized
Quantity:	150 µg
Purification:	Immunogen affinity purified
Reconstitution:	Reconstitution with 150 µl of sterile 1XPBS (PH=7.4). "Note: please spin tube briefly prior to opening it to avoid any losses that might occur from lyophilized material adhering to the cap or sides of the tube".
Stability & Storage:	Use a manual defrost freezer and avoid repeated freeze-thaw cycles. 12 months from date of receipt, -20 to -70°C as supplied. 6 months, -20 to -70°C under sterile conditions after reconstitution. 1 month, 2 to 8°C under sterile conditions after reconstitution.
Shipping:	The product is shipped at 4°C. Upon receipt, store it immediately at the temperature recommended above.

Application Information

Recommended Dilution:	Western Blot (1:1000-1:2000) Note: Optimal dilutions/concentrations should be determined by the end user.
------------------------------	--

Research Use Only

Expected / apparent MW:

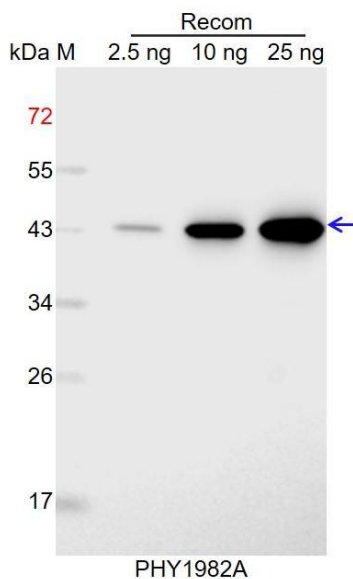
110 kDa

Predicted Reactivity:

Among species analyzed, the sequence of the synthetic peptide used for immunization is 100% homologues with the sequence in *Brassica napu*, *Brassica rapa*, and 80-99% homologues with the sequence in *Populus trichocarpa*, *Sorghum bicolor*, *Zea mays*, *Panicum virgatum*, *Setaria viridis*, *Gossypium raimondii*, *Hordeum vulgare*, *Triticum aestivum*, *Oryza sativa*, *Setaria viridis*, *Spinacia oleracea*, *Glycine max*, *Nicotiana tabacum*, *Solanum tuberosum*, *Cucumis sativus*, *Solanum lycopersicum*, *Medicago truncatula*, *Vitis vinifera*.

For more species homologues information, please contact tech support at tech@phytoab.com.

Application Example



Recom: 2.5 ng, 10 ng and 25 ng recombinant protein containing the peptide for immunization and having a molecular mass of 43 kDa.

Electrophoresis: 12% SDS-PAGE

Transfer: blotting to NC (nitrocellulose) membrane for 1 h.

Blocking: 5% skim milk at RT or 4°C for 1 h.

Primary antibody: 1:1000 dilution overnight at 4°C.

Secondary antibody: 1:10000 dilution using Goat Anti-Rabbit IgG H&L (HRP) (Cat# PHY6000).

Detection: using chemiluminescence substrate and image were captured with CCD camera.