

Anti-Protein COFACTOR ASSEMBLY OF COMPLEX C SUBUNIT B CCB3, chloroplastic antibody

Catalog: PHY2899A

Product Information

Description:	Rabbit polyclonal antibody
Background:	CCB3 is one of four Arabidopsis homologs of bacterial ymlg proteins. It is required for the biogenesis and accumulation of native cytochrome b6 in the thylakoid membrane. It controls the conversion of apocytochrome b6 to holocytochrome b6. It is required for covalent binding of the c-type heme to cytochrome b6.
Synonyms:	CCB3, ATYLMG3, COFACTOR ASSEMBLY, COMPLEX C (B6F), YLMG3
Immunogen:	KLH-conjugated synthetic peptide (16 aa from Central section) derived from <i>Arabidopsis thaliana</i> CCB3 (AT5G36120).
Form:	Lyophilized
Quantity:	150 µg
Purification:	Immunogen affinity purified
Reconstitution:	Reconstitution with 150 µl of 0.01 M sterile PBS. "Note: please spin tube briefly prior to opening it to avoid any losses that might occur from lyophilized material adhering to the cap or sides of the tube".
Stability & Storage:	Use a manual defrost freezer and avoid repeated freeze-thaw cycles. 12 months from date of receipt, -20 to -70°C as supplied. 6 months, -20 to -70°C under sterile conditions after reconstitution. 1 month, 2 to 8°C under sterile conditions after reconstitution.
Shipping:	The product is shipped at 4°C. Upon receipt, store it immediately at the temperature recommended above.

Application Information

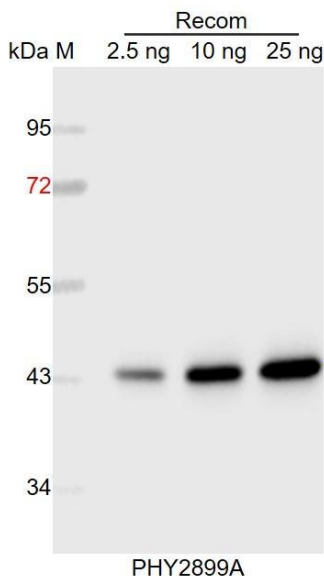
Recommended Dilution:	Western Blot (1:1000-1:2000) Note: Optimal dilutions/concentrations should be determined by the end user.
Expected / apparent MW:	19 kDa
Predicted Reactivity:	Among species analyzed, the sequence of the synthetic peptide used for immunization is 100% homologues with the sequence in <i>Brassica</i>

Research Use Only

rapa, *Brassica napus*, and 80-99% homologues with the sequence in *Spinacia oleracea*, *Gossypium raimondii*, *Glycine max*, *Medicago truncatula*, *Cucumis sativus*, *Populus trichocarpa*, *Vitis vinifera*, *Solanum tuberosum*, *Solanum lycopersicum*, *Hordeum vulgare*, *Triticum aestivum*, *Panicum virgatum*, *Nicotiana tabacum*, *Setaria viridis*.

For more species homologues information, please contact tech support at tech@phytoab.com.

Application Example



Recom: 2.5 ng, 10 ng and 25 ng recombinant protein containing the peptide for immunization and having a molecular mass of 44 kDa.

Electrophoresis: 12% SDS-PAGE

Transfer: blotting to NC (nitrocellulose) membrane for 1 h.

Blocking: 5% skim milk at RT or 4°C for 1 h.

Primary antibody: 1:1000 dilution overnight at 4°C.

Secondary antibody: 1:10000 dilution using Goat Anti-Rabbit IgG H&L (HRP) (Cat# PHY6000).

Detection: using chemiluminescence substrate and image were captured with CCD camera.