

# Anti-Probable WRKY transcription factor 19 antibody

Catalog: PHY7526S

## Product Information

<b>Description:</b>	Rabbit polyclonal antibody
<b>Background:</b>	WRKY19 is a member of the A1 subgroup of the MEKK (MAPK/ERK kinase kinase) family. MEKK is another name for Mitogen-Activated Protein Kinase Kinase Kinase (MAPKKK or MAP3K). This subgroup has four members: At4g08500 (MEKK1, also known as ARAKIN, MAP3Kb1, MAPKKK8), At4g08480 (MEKK2, also known as MAP3Kb4, MAPKKK9), At4g08470 (MEKK3, also known as MAP3Kb3, MAPKKK10) and At4g12020 (MEKK4, also known as MAP3Kb5, MAPKKK11, WRKY19).
<b>Synonyms:</b>	WRKY19, MAPK/ERK KINASE KINASE 4, MAPKKK11, MEKK4, MITOGEN-ACTIVATED PROTEIN KINASE KINASE KINASE 11, ATWRKY19
<b>Immunogen:</b>	KLH-conjugated synthetic peptide (19 aa from N terminal section) derived from <i>Arabidopsis thaliana</i> WRKY19 (AT4G12020).
<b>Form:</b>	Lyophilized
<b>Quantity:</b>	150 µg
<b>Purification:</b>	Serum Peptide affinity form antibody available upon request at <a href="mailto:info@phytoab.com">info@phytoab.com</a> .
<b>Reconstitution:</b>	Reconstitution with 150 µl of sterile water. "Note: please spin tube briefly prior to opening it to avoid any losses that might occur from lyophilized material adhering to the cap or sides of the tube".
<b>Stability &amp; Storage:</b>	Use a manual defrost freezer and avoid repeated freeze-thaw cycles. 12 months from date of receipt, -20 to -70°C as supplied. 6 months, -20 to -70°C under sterile conditions after reconstitution. 1 month, 2 to 8°C under sterile conditions after reconstitution.
<b>Shipping:</b>	The product is shipped at 4°C. Upon receipt, store it immediately at the temperature recommended above.

## Application Information

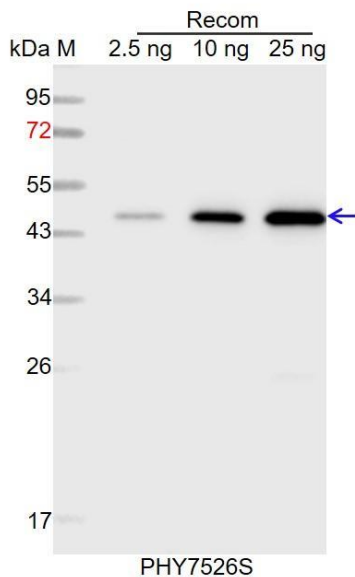
<b>Recommended Dilution:</b>	Western Blot (1:1000-1:2000) Note: Optimal dilutions/concentrations should be determined by the end user.
------------------------------	--

Research Use Only

**Expected / apparent MW:** 210 kDa

**Predicted Reactivity:** For more species homologues information, please contact tech support at [tech@phytoab.com](mailto:tech@phytoab.com).

## Application Example



Recom: 2.5 ng, 10 ng and 25 ng recombinant protein containing the peptide for immunization and having a molecular mass of 47 kDa.

**Electrophoresis:** 12% SDS-PAGE

**Transfer:** blotting to NC (nitrocellulose) membrane for 1 h.

**Blocking:** 5% skim milk at RT or 4°C for 1 h.

**Primary antibody:** 1:1000 dilution overnight at 4°C.

**Secondary antibody:** 1:10000 dilution using Goat Anti-Rabbit IgG H&L (HRP) (Cat# PHY6000).

**Detection:** using chemiluminescence substrate and image were captured with CCD camera.