

Anti-Ribulose biphosphate carboxylase small chain 1A, chloroplastic antibody

Catalog: PHY7483S

Product Information

Description:	Rabbit polyclonal antibody
Background:	In photosynthetic organisms, D-ribulose-1,5-bisphosphate carboxylase/oxygenase (Rubisco) is the major enzyme assimilating atmospheric CO ₂ into the biosphere. This enzyme contains two subunits, each present in eight copies. In plants and green algae, 55-kD large subunit (RbcL) is coded by the chloroplast rbcL gene, and the 15-kD small subunit (RbcS) is coded by a family of nuclear rbcS genes (AT1G67090, AT5G38430, AT5G38420, AT5G38410).
Synonyms:	RBCS1A, RIBULOSE BISPHOSPHATE CARBOXYLASE SMALL CHAIN 1A
Immunogen:	KLH-conjugated synthetic peptide (15 aa from Central section) derived from <i>Arabidopsis thaliana</i> RBCS1A (AT1G67090).
Form:	Lyophilized
Quantity:	150 µg
Purification:	Serum Peptide affinity form antibody available upon request at info@phytoab.com .
Reconstitution:	Reconstitution with 150 µl of sterile water. "Note: please spin tube briefly prior to opening it to avoid any losses that might occur from lyophilized material adhering to the cap or sides of the tube".
Stability & Storage:	Use a manual defrost freezer and avoid repeated freeze-thaw cycles. 12 months from date of receipt, -20 to -70°C as supplied. 6 months, -20 to -70°C under sterile conditions after reconstitution. 1 month, 2 to 8°C under sterile conditions after reconstitution.
Shipping:	The product is shipped at 4°C. Upon receipt, store it immediately at the temperature recommended above.

Application Information

Recommended Dilution:	Western Blot (1:1000-1:2000) Note: Optimal dilutions/concentrations should be determined by the end user.
------------------------------	--

Research Use Only

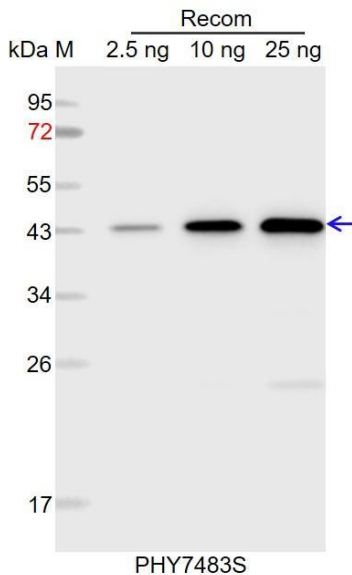
Expected / apparent MW: 20 kDa

Predicted Reactivity: Among species analyzed, the sequence of the synthetic peptide used for immunization is 80-99% homologues with the sequence in *Brassica rapa*, *Brassica napus*, *Glycine max*, *Spinacia oleracea*, *Solanum tuberosum*.

The sequence of the synthetic peptide used for immunization is 93% (14/15) homologues with the sequence in RBCS1B (AT5G38430), RBCS2B (AT5G38420) and RBCS3B (AT5G38410).

For more species homologues information, please contact tech support at tech@phytoab.com.

Application Example



Recom: 2.5 ng, 10 ng and 25 ng recombinant protein containing the peptide for immunization and having a molecular mass of 43 kDa.

Electrophoresis: 12% SDS-PAGE

Transfer: blotting to NC (nitrocellulose) membrane for 1 h.

Blocking: 5% skim milk at RT or 4°C for 1 h.

Primary antibody: 1:1000 dilution overnight at 4°C.

Secondary antibody: 1:10000 dilution using Goat Anti-Rabbit IgG H&L (HRP) (Cat# PHY6000).

Detection: using chemiluminescence substrate and image were captured with CCD camera.