

# Anti-PHOSPHATE TRANSPORTER 1;2 antibody

Catalog: PHY7439S

## Product Information

<b>Description:</b>	Rabbit polyclonal antibody
<b>Background:</b>	PHOSPHATE TRANSPORTER 1 (PHT1) is an inorganic phosphate transporter. Arabidopsis PHT1 family transporters contain 9 proteins: Pht1;1/AT5G43350, Pht1;2/AT5G43370, Pht1;3/AT5G43360, Pht1;4/AT2G38940, Pht1;5/AT2G32830, Pht1;6/AT5G43340, Pht1;7/AT3G54700, Pht1;8/AT1G20860, Pht1;9/AT1G76430.
<b>Synonyms:</b>	PHT1-2, APT1, ARABIDOPSIS PHOSPHATE TRANSPORTER 1, PHOSPHATE TRANSPORTER 2, PHT1;2, PHT2
<b>Immunogen:</b>	KLH-conjugated synthetic peptide (16 aa from Central section) derived from <i>Arabidopsis thaliana</i> PHT1-2 (AT5G43370).
<b>Form:</b>	Lyophilized
<b>Quantity:</b>	150 µg
<b>Purification:</b>	Serum Peptide affinity form antibody available upon request at <a href="mailto:info@phytoab.com">info@phytoab.com</a> .
<b>Reconstitution:</b>	Reconstitution with 150 µl of sterile water. "Note: please spin tube briefly prior to opening it to avoid any losses that might occur from lyophilized material adhering to the cap or sides of the tube".
<b>Stability &amp;</b>	Use a manual defrost freezer and avoid repeated freeze-thaw cycles.
<b>Storage:</b>	12 months from date of receipt, -20 to -70°C as supplied. 6 months, -20 to -70°C under sterile conditions after reconstitution. 1 month, 2 to 8°C under sterile conditions after reconstitution.
<b>Shipping:</b>	The product is shipped at 4°C. Upon receipt, store it immediately at the temperature recommended above.

## Application Information

<b>Applications:</b>	Western Blot (1:1000-1:2000) Note: Optimal dilutions/concentrations should be determined by the end user.
<b>Expected Results:</b>	58 kDa

Research Use Only

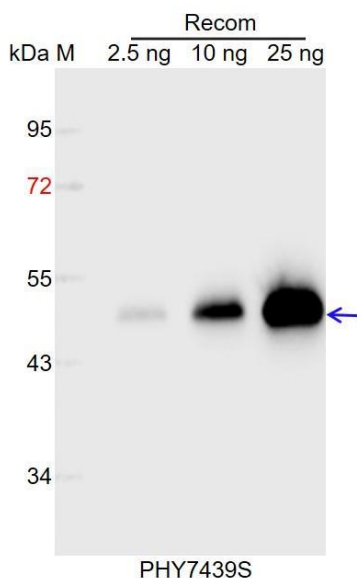
### Predicted Reactivity:

Among species analyzed, the sequence of the synthetic peptide used for immunization is 80-99% homologues with the sequence in *Brassica napus*, *Brassica rapa*.

The sequence of the synthetic peptide used for immunization is 94% (15/16) homologues with the sequence in PHT1-1 (AT5G43350), and 88% (14/16) homologues with the sequence in PHT1-3 (AT5G43360).

For more species homologues information, please contact tech support at [tech@phytoab.com](mailto:tech@phytoab.com).

### Application Example



Recom: 2.5 ng, 10 ng and 25 ng recombinant protein containing the peptide for immunization and having a molecular mass of 48 kDa.

**Electrophoresis:** 12% SDS-PAGE

**Transfer:** blotting to NC (nitrocellulose) membrane for 1 h.

**Blocking:** 5% skim milk at RT or 4°C for 1 h.

**Primary antibody:** 1:1000 dilution overnight at 4°C.

**Secondary antibody:** 1:10000 dilution using Goat Anti-Rabbit IgG H&L (HRP) (Cat# PHY6000).

**Detection:** using chemiluminescence substrate and image were captured with CCD camera.