

Anti-PsaN antibody

Catalog: PHY5621S

Product Information

Description:	Rabbit polyclonal antibody
Background:	PsaN
Synonyms:	PsaN
Immunogen:	KLH-conjugated synthetic peptide (14 aa from Central section) derived from <i>Chlamydomonas reinhardtii</i> PsaN (Cre02.g082500).
Form:	Lyophilized
Quantity:	150 µg
Purification:	Serum Peptide affinity form antibody available upon request at info@phytoab.com .
Reconstitution:	Reconstitution with 150 µl of sterile water. "Note: please spin tube briefly prior to opening it to avoid any losses that might occur from lyophilized material adhering to the cap or sides of the tube".
Stability & Storage:	Use a manual defrost freezer and avoid repeated freeze-thaw cycles. 12 months from date of receipt, -20 to -70°C as supplied. 6 months, -20 to -70°C under sterile conditions after reconstitution. 1 month, 2 to 8°C under sterile conditions after reconstitution.
Shipping:	The product is shipped at 4°C. Upon receipt, store it immediately at the temperature recommended above.

Application Information

Recommended Dilution:	Western Blot (1:1000-1:2000) Note: Optimal dilutions/concentrations should be determined by the end user.
Expected / apparent MW:	15 kDa
Confirmed Reactivity:	<i>Chlamydomonas reinhardtii</i>
Predicted Reactivity:	Among species analyzed, the sequence of the synthetic peptide used for immunization is 80-99% homologues with the sequence in <i>Vitis vinifera</i> , <i>Gossypium raimondii</i> , <i>Zea mays</i> , <i>Sorghum bicolor</i> , <i>Brassica napus</i> , <i>Populus trichocarpa</i> , <i>Brassica rapa</i> , <i>Medicago truncatula</i> ,

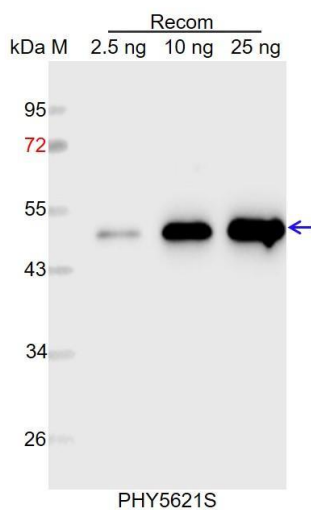
Research Use Only

Arabidopsis thaliana, *Cucumis sativus*, *Solanum tuberosum*,
Nicotiana tabacum, *Solanum lycopersicum*, *Panicum virgatum*, *Oryza sativa*, *Setaria viridis*.

For more species homologues information, please contact tech support at tech@phytoab.com.

Application Example

Example1



Recom: 2.5 ng, 10 ng and 25 ng recombinant protein containing the peptide for immunization and having a molecular mass of 47 kDa.

Electrophoresis: 12% SDS-PAGE

Transfer: blotting to NC (nitrocellulose) membrane for 1 h.

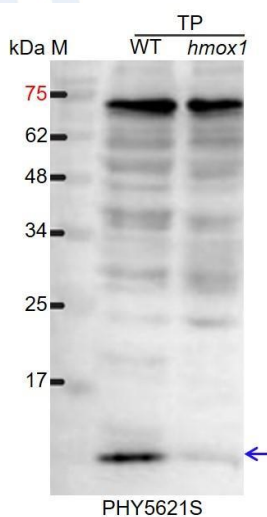
Blocking: 5% skim milk at RT or 4°C for 1 h.

Primary antibody: 1:1000 dilution overnight at 4°C.

Secondary antibody: 1:10000 dilution using Goat Anti-Rabbit IgG H&L (HRP) (Cat# PHY6000).

Detection: using chemiluminescence substrate and image were captured with CCD camera.

Example2



TP-WT: 30 µg total protein from WT of *Chlamydomonas reinhardtii* under the condition of 24 h dark.

TP-*hmox*: 30 µg total protein from mutant of *Chlamydomonas reinhardtii* under the condition of 24 h dark.

Electrophoresis: 10% SDS-PAGE

Transfer: blotting to PVDF membrane for 1 h.

Blocking: 5% skim milk at RT or 4°C for 2 h.

Primary antibody: 1:1000 dilution overnight at 4°C.

Secondary antibody: 1:5000 dilution using Goat Anti-Rabbit IgG H&L (HRP) (Cat# PHY6000).

Detection: Signal was generated by enhanced chemiluminescence kit (Bio-Rad, 170-5060) and was acquired by a chemiluminescence detection instrument (Tanon, 4600 Multi).