

Anti-Aquaporin TIP1-1, N-terminal antibody

Catalog: PHY1482A

Product Information

Description:	Rabbit polyclonal antibody
Background:	TIP1-1 is a tonoplast intrinsic protein, which functions as water channel. It has also been shown to be able to facilitate the transport of urea and hydrogen peroxide. Highly expressed in vascular tissues of the root, stem, cauline leaves and flowers but not in the apical meristems.
Synonyms:	TIP1-1, GAMMA TONOPLAST INTRINSIC PROTEIN, GAMMA TONOPLAST INTRINSIC PROTEIN 1, GAMMA-TIP, GAMMA-TIP1, TIP1;1, TONOPLAST INTRINSIC PROTEIN 1;1
Immunogen:	KLH-conjugated synthetic peptide (20 aa from N terminal section) derived from <i>Arabidopsis thaliana</i> TIP1-1 (AT2G36830).
Form:	Lyophilized
Quantity:	150 µg
Purification:	Immunogen affinity purified
Reconstitution:	Reconstitution with 150 µl of 0.01 M sterile PBS. "Note: please spin tube briefly prior to opening it to avoid any losses that might occur from lyophilized material adhering to the cap or sides of the tube".
Stability & Storage:	Use a manual defrost freezer and avoid repeated freeze-thaw cycles. 12 months from date of receipt, -20 to -70°C as supplied. 6 months, -20 to -70°C under sterile conditions after reconstitution. 1 month, 2 to 8°C under sterile conditions after reconstitution.
Shipping:	The product is shipped at 4°C. Upon receipt, store it immediately at the temperature recommended above.

Application Information

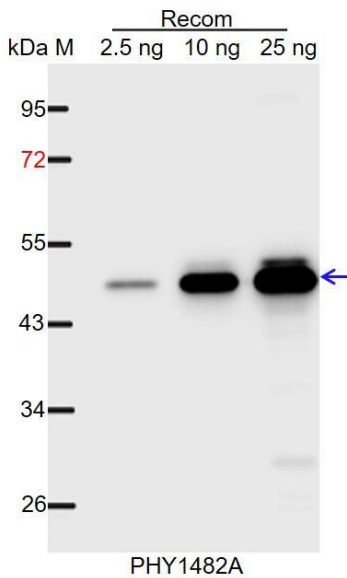
Recommended Dilution:	Western Blot (1:1000-1:2000) Note: Optimal dilutions/concentrations should be determined by the end user.
Expected / apparent MW:	26 kDa
Predicted Reactivity:	Among species analyzed, the sequence of the synthetic peptide used for immunization is 80-99% homologues with the sequence in

Research Use Only

Brassica napus, Vitis vinifera, Cucumis sativus, Gossypium raimondii, Brassica rapa, Glycine max, Nicotiana tabacum.

For more species homologues information, please contact tech support at tech@phytoab.com.

Application Example



Recom: 2.5 ng, 10 ng and 25 ng recombinant protein containing the peptide for immunization and having a molecular mass of 47 kDa.

Electrophoresis: 12% SDS-PAGE

Transfer: blotting to NC (nitrocellulose) membrane for 1 h.

Blocking: 5% skim milk at RT or 4°C for 1 h.

Primary antibody: 1:1000 dilution overnight at 4°C.

Secondary antibody: 1:10000 dilution using Goat Anti-Rabbit IgG H&L (HRP) (Cat# PHY6000).

Detection: using chemiluminescence substrate and image were captured with CCD camera.