

Anti-Heat shock protein 90.1/4, C-terminal antibody

Catalog: PHY0035S

Product Information

Description:	Rabbit polyclonal antibody
Background:	HSP90 (heat shock protein 90) is an isoform involved in response to bacterium, arsenic and heat. Hsp90 (heat shock protein 90) is a chaperone protein that assists other proteins to fold properly, stabilizes proteins against heat stress, and aids in protein degradation. The seven members of the 90-kDa heat shock protein (Hsp90) family are Hsp90-1 (AT5G52640), Hsp90-2 (AT5G56030), Hsp90-3 (AT5G56010), Hsp90-4 (AT5G56000), Hsp90-5 (AT2G04030), Hsp90-6 (AT3G07770), Hsp90-7 (AT4G24190).
Synonyms:	HSP90.1/4, ATHSP90.1/4, HSP81.1/4, HEAT SHOCK PROTEIN 81.1/4, HEAT SHOCK PROTEIN 90.1/4
Immunogen:	KLH-conjugated synthetic peptide (15 aa from C terminal section) derived from <i>Arabidopsis thaliana</i> HSP90.1 (AT5G52640) and HSP90.4 (AT5G56000).
Form:	Lyophilized
Quantity:	150 µg
Purification:	Serum Peptide affinity form antibody available upon request at info@phytoab.com .
Reconstitution:	Reconstitution with 150 µl of sterile water. "Note: please spin tube briefly prior to opening it to avoid any losses that might occur from lyophilized material adhering to the cap or sides of the tube".
Stability & Storage:	Use a manual defrost freezer and avoid repeated freeze-thaw cycles. 12 months from date of receipt, -20 to -70°C as supplied. 6 months, -20 to -70°C under sterile conditions after reconstitution. 1 month, 2 to 8°C under sterile conditions after reconstitution.
Shipping:	The product is shipped at 4°C. Upon receipt, store it immediately at the temperature recommended above.

Application Information

Recommended Dilution:	Western Blot (1:1000-1:2000) Note: Optimal dilutions/concentrations should be determined by the end user.
------------------------------	--

Research Use Only

Expected / apparent MW:

81 kDa

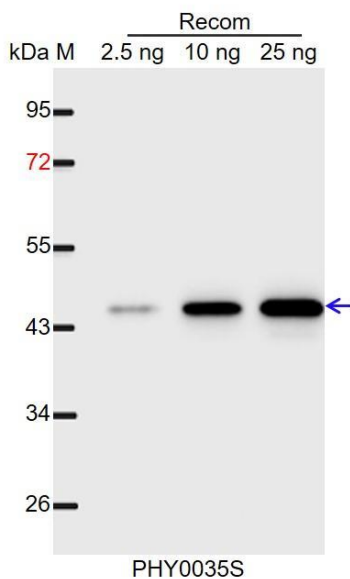
Predicted Reactivity:

Among species analyzed, the sequence of the synthetic peptide used for immunization is 100% homologues with the sequence in *Setaria viridis*, *Brassica napus*, *Brassica rapa*, *Hordeum vulgare*, *Panicum virgatum*, *Zea mays*, *Nicotiana tabacum*, *Cucumis sativus*, *Populus trichocarpa*, *Gossypium raimondii*, *Glycine max*, *Sorghum bicolor*, *Medicago truncatula*.

The sequence of the synthetic peptide used for immunization is 93% (14 / 15) homologues with the sequence in HSP90.2 (AT5G56030) and HSP90.3 (AT5G56010).

For more species homologues information, please contact tech support at tech@phytoab.com.

Application Example



Recom: 2.5 ng, 10 ng and 25 ng recombinant protein containing the peptide for immunization and having a molecular mass of 45 kDa.

Electrophoresis: 12% SDS-PAGE

Transfer: blotting to NC (nitrocellulose) membrane for 1 h.

Blocking: 5% skim milk at RT or 4°C for 1 h.

Primary antibody: 1:1000 dilution overnight at 4°C.

Secondary antibody: 1:10000 dilution using Goat Anti-Rabbit IgG H&L (HRP) (Cat# PHY6000).

Detection: using chemiluminescence substrate and image were captured with CCD camera.