

Anti-Heat shock protein 90-1 antibody

Catalog: PHY3074A

Product Information

Description:	Rabbit polyclonal antibody
Background:	HSP90.1 (heat shock protein 90.1) is an isoform involved in response to bacterium, arsenic and heat. Hsp90-1 (heat shock protein 90-1) is a chaperone protein that assists other proteins to fold properly, stabilizes proteins against heat stress, and aids in protein degradation.
Synonyms:	HSP90.1, HSP90-1, ATHS83, ATHSP90-1, ATHSP90.1, HEAT SHOCK PROTEIN 81-1, HEAT SHOCK PROTEIN 83, HEAT SHOCK PROTEIN 90-1, HEAT SHOCK PROTEIN 90.1, HSP81-1, HSP81.1, HSP83, HSP90-1
Immunogen:	KLH-conjugated synthetic peptide (19 aa from C terminal section) derived from <i>Arabidopsis thaliana</i> HSP90.1 (AT5G52640).
Form:	Lyophilized
Quantity:	150 µg
Purification:	Immunogen affinity purified
Reconstitution:	Reconstitution with 150 µl of 0.01 M sterile PBS. "Note: please spin tube briefly prior to opening it to avoid any losses that might occur from lyophilized material adhering to the cap or sides of the tube".
Stability & Storage:	Use a manual defrost freezer and avoid repeated freeze-thaw cycles. 12 months from date of receipt, -20 to -70°C as supplied. 6 months, -20 to -70°C under sterile conditions after reconstitution. 1 month, 2 to 8°C under sterile conditions after reconstitution.
Shipping:	The product is shipped at 4°C. Upon receipt, store it immediately at the temperature recommended above.

Application Information

Recommended Dilution:	Western Blot (1:1000-1:2000) Note: Optimal dilutions/concentrations should be determined by the end user.
Expected / apparent MW:	81 kDa
Predicted Reactivity:	Among species analyzed, the sequence of the synthetic peptide used for immunization is 100% homologous with the sequence in <i>Solanum</i>

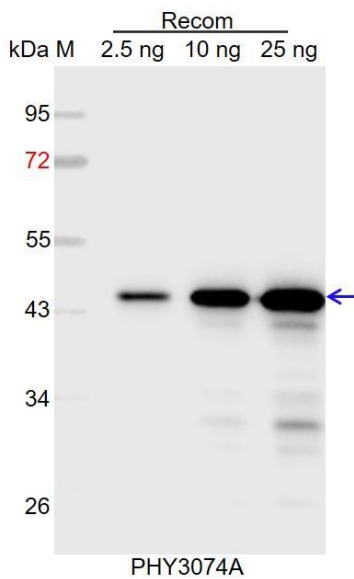
Research Use Only

tuberosum, *Vitis vinifera*, *Brassica napus*, *Hordeum vulgare*, *Sorghum bicolor*, *Panicum virgatum*, *Zea mays*, *Triticum aestivum*, *Setaria viridis*, *Gossypium raimondii*, *Solanum lycopersicum*, *Nicotiana tabacum*, *Cucumis sativus*, *Populus trichocarpa*, *Oryza sativa*, *Glycine max*, *Medicago truncatula*, and 80-99% homologues with the sequence in *Spinacia oleracea*.

The sequence of the synthetic peptide used for immunization is 84% (16 / 19) homologues with the sequence in HSP90.2 (AT5G56030), HSP81-3 (AT5G56010) and HSP81.4 (AT5G56000).

For more species homologues information, please contact tech support at tech@phytoab.com.

Application Example



Recom: 2.5 ng, 10 ng and 25 ng recombinant protein containing the peptide for immunization and having a molecular mass of 53 kDa.

Electrophoresis: 12% SDS-PAGE

Transfer: blotting to NC (nitrocellulose) membrane for 1 h.

Blocking: 5% skim milk at RT or 4°C for 1 h.

Primary antibody: 1:1000 dilution overnight at 4°C.

Secondary antibody: 1:10000 dilution using Goat Anti-Rabbit IgG H&L (HRP) (Cat# PHY6000).

Detection: using chemiluminescence substrate and image were captured with CCD camera.