

# Anti-PsaE subunit of photosystem I antibody

Catalog: PHY3030A

## Product Information

<b>Description:</b>	Rabbit polyclonal antibody
<b>Background:</b>	PsaE-1 is part of the stromal side of photosystem I (PSI). In <i>Arabidopsis thaliana</i> , the two nuclear genes <i>PsaE1</i> and <i>PsaE2</i> code for PSI-E, and transcripts of PsaE1 are markedly more abundant than PsaE2 transcripts.
<b>Synonyms:</b>	PsaE-1, PSA E1 KNOCKOUT, PSAE-1
<b>Immunogen:</b>	KLH-conjugated synthetic peptide (20 aa from Central section) derived from <i>Arabidopsis thaliana</i> PsaE-1 (AT4G28750).
<b>Form:</b>	Lyophilized
<b>Quantity:</b>	150 µg
<b>Purification:</b>	Immunogen affinity purified
<b>Reconstitution:</b>	Reconstitution with 150 µl of 0.01M sterile PBS. "Note: please spin tube briefly prior to opening it to avoid any losses that might occur from lyophilized material adhering to the cap or sides of the tube".
<b>Stability &amp; Storage:</b>	Use a manual defrost freezer and avoid repeated freeze-thaw cycles. 12 months from date of receipt, -20 to -70°C as supplied. 6 months, -20 to -70°C under sterile conditions after reconstitution. 1 month, 2 to 8°C under sterile conditions after reconstitution.
<b>Shipping:</b>	The product is shipped at 4°C. Upon receipt, store it immediately at the temperature recommended above.

## Application Information

<b>Recommended Dilution:</b>	Western Blot (1:1000-1:10000) Note: Optimal dilutions/concentrations should be determined by the end user.
<b>Expected / apparent MW:</b>	15 / 14 kDa
<b>Confirmed Reactivity:</b>	<i>Arabidopsis thaliana</i>
<b>Predicted Reactivity:</b>	Among species analyzed, the sequence of the synthetic peptide used for immunization is 100% homologues with the sequence in <i>Brassica rapa</i> , <i>Brassica napus</i> , and 80-99% homologues with the sequence in <i>Oryza sativa</i> , <i>Sorghum bicolor</i> , <i>Panicum virgatum</i> , <i>Setaria viridis</i> ,

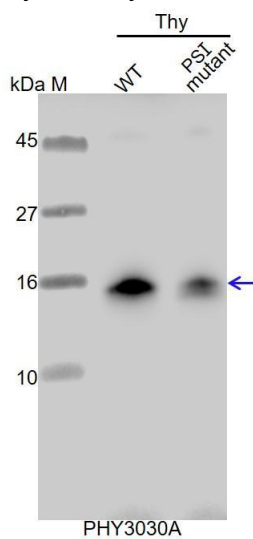
Research Use Only

*Gossypium raimondii*, *Zea mays*, *Medicago truncatula*, *Glycine max*,  
*Populus trichocarpa*, *Vitis vinifera*, *Triticum aestivum*, *Hordeum  
vulgare*, *Solanum tuberosum*, *Solanum lycopersicum*, *Spinacia  
oleracea*, *Nicotiana tabacum*, *Cucumis sativus*.

For more species homologues information, please contact tech support at [tech@phytoab.com](mailto:tech@phytoab.com).

## Application Example

Thy-WT: thylakoid membrane protein from WT of *Arabidopsis thaliana* containing 0.5 µg of chlorophyll.



Thy-PS I : thylakoid membrane protein from an Arabidopsis mutant with low accumulation of PS I containing 0.5 µg of chlorophyll.

**Electrophoresis:** Tricine-SDS-PAGE

**Transfer:** blotting to NC (nitrocellulose) membrane for 1 h.

**Blocking:** 5% skim milk at RT or 4°C for 1 h.

**Primary antibody:** 1:10000 dilution overnight at 4°C.

**Secondary antibody:** 1:10000 dilution using Goat Anti-Rabbit IgG H&L(HRP) (Cat# PHY6000).

**Detection:** using chemiluminescence substrate and image were captured with CCD camera.