

Anti-Phragmoplastin DRP1A antibody

Catalog: PHY2191A

Product Information

Description:	Rabbit polyclonal antibody
Background:	DRP1A encodes a dynamin-like protein related to phragmoplastin. Mutations in this gene, in combination with mutation in ADL1E, result in defects in embryogenesis, cell plate formation and trichome branching. Also controls vascular patterning in combination with VAN3 and GNOM. DRP2B and DRP1A participate together in clathrin-coated vesicle formation during endocytosis.
Synonyms:	DRP1A, ADL1, ADL1A, AG68, DL1, DYNAMIN-LIKE PROTEIN, DYNAMIN-RELATED PROTEIN 1A, RADIAL SWELLING 9, RSW9
Immunogen:	KLH-conjugated synthetic peptide (15 aa from C terminal section) derived from <i>Arabidopsis thaliana</i> DRP1A (AT5G42080).
Form:	Lyophilized
Quantity:	150 µg
Purification:	Immunogen affinity purified
Reconstitution:	Reconstitution with 150 µl of 0.01 M sterile PBS. "Note: please spin tube briefly prior to opening it to avoid any losses that might occur from lyophilized material adhering to the cap or sides of the tube".
Stability & Storage:	Use a manual defrost freezer and avoid repeated freeze-thaw cycles. 12 months from date of receipt, -20 to -70°C as supplied. 6 months, -20 to -70°C under sterile conditions after reconstitution. 1 month, 2 to 8°C under sterile conditions after reconstitution.
Shipping:	The product is shipped at 4°C. Upon receipt, store it immediately at the temperature recommended above.

Application Information

Recommended Dilution:	Western Blot (1:1000-1:2000) Note: Optimal dilutions/concentrations should be determined by the end user.
Expected / apparent MW:	68 kDa
Predicted Reactivity:	Among species analyzed, the sequence of the synthetic peptide used for immunization is 100% homologues with the sequence in

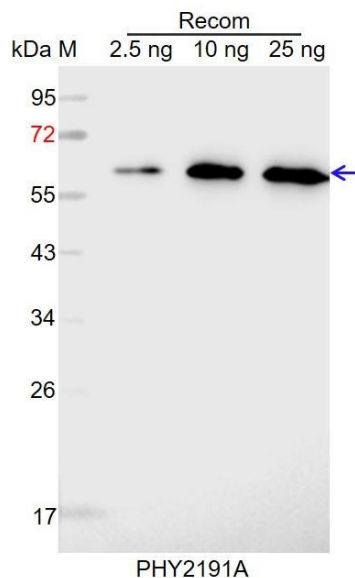
Research Use Only

Brassica rapa, Brassica napus, Spinacia oleracea, Cucumis sativus, and 80-99% homologues with the sequence in *Vitis vinifera, Solanum tuberosum, Nicotiana tabacum, Solanum lycopersicum, Populus trichocarpa, Medicago truncatula, Glycine max, Zea mays, Oryza sativa Japonica Group, Panicum virgatum, Setaria viridis, Sorghum bicolor, Triticum aestivum, Hordeum vulgare, Gossypium raimondii.*

The sequence of the synthetic peptide used for immunization is 93% (14/15) homologues with the sequence in DL1B (AT3G61760).

For more species homologues information, please contact tech support at tech@phytoab.com.

Application Example



Recom: 2.5 ng, 10 ng and 25 ng recombinant protein containing the peptide for immunization and having a molecular mass of 62 kDa.

Electrophoresis: 12% SDS-PAGE

Transfer: blotting to NC (nitrocellulose) membrane for 1 h.

Blocking: 5% skim milk at RT or 4°C for 1 h.

Primary antibody: 1:1000 dilution overnight at 4°C.

Secondary antibody: 1:10000 dilution using Goat Anti-Rabbit IgG H&L (HRP) (Cat# PHY6000).

Detection: using chemiluminescence substrate and image were captured with CCD camera.