

Anti-Calcium-dependent protein kinase 3 antibody

Catalog: PHY3439A

Product Information

Description:	Rabbit polyclonal antibody
Background:	Calcium dependent protein kinase 3 (CPK3), a member of the Arabidopsis CDPK gene family. CDPKs protein kinases have been proposed to function in multiple plant signal transduction pathways downstream of $[Ca^{2+}]_{cyt}$ elevations, thus transducing various physiological responses. Functions in guard cell ion channel regulation.
Synonyms:	CDPK6, ATCDPK6, CALCIUM DEPENDENT PROTEIN KINASE 3, CALCIUM-DEPENDENT PROTEIN KINASE 6, CPK3
Immunogen:	KLH-conjugated synthetic peptide (13 aa from C terminal section) derived from <i>Arabidopsis thaliana</i> CDPK6 (AT4G23650).
Form:	Lyophilized
Quantity:	150 μ g
Purification:	Immunogen affinity purified
Reconstitution:	Reconstitution with 150 μ l of 0.01 M sterile PBS. "Note: please spin tube briefly prior to opening it to avoid any losses that might occur from lyophilized material adhering to the cap or sides of the tube".
Stability & Storage:	Use a manual defrost freezer and avoid repeated freeze-thaw cycles. 12 months from date of receipt, -20 to -70°C as supplied. 6 months, -20 to -70°C under sterile conditions after reconstitution. 1 month, 2 to 8°C under sterile conditions after reconstitution.
Shipping:	The product is shipped at 4°C. Upon receipt, store it immediately at the temperature recommended above.

Application Information

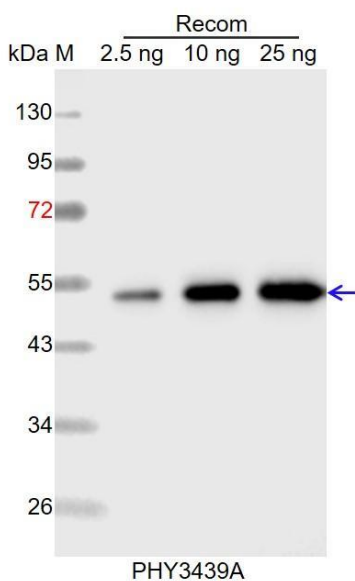
Recommended Dilution:	Western Blot (1:1000-1:2000) Note: Optimal dilutions/concentrations should be determined by the end user.
Expected / apparent MW:	59 kDa
Predicted Reactivity:	Among species analyzed, the sequence of the synthetic peptide used for immunization is 80-99% homologues with the sequence in

Research Use Only

Populus trichocarpa, Glycine max, Oryza sativa, Panicum virgatum, Setaria viridis, Sorghum bicolor, Zea mays, Spinacia oleracea, Vitis vinifera, Gossypium raimondii, Cucumis sativus, Medicago truncatula, Nicotiana tabacum, Brassica napus, Brassica rapa, Triticum aestivum, Hordeum vulgare.

For more species homologues information, please contact tech support at tech@phytoab.com.

Application Example



Recom: 2.5 ng, 10 ng and 25 ng recombinant protein containing the peptide for immunization and having a molecular mass of 54 kDa.

Electrophoresis: 12% SDS-PAGE

Transfer: blotting to NC (nitrocellulose) membrane for 1 h.

Blocking: 5% skim milk at RT or 4°C for 1 h.

Primary antibody: 1:1000 dilution overnight at 4°C.

Secondary antibody: 1:10000 dilution using Goat Anti-Rabbit IgG H&L (HRP) (Cat# PHY6000).

Detection: using chemiluminescence substrate and image were captured with CCD camera.