

# Anti-Ubiquitin, N-terminal antibody

Catalog: PHY2397A

## Product Information

<b>Description:</b>	Rabbit polyclonal antibody
<b>Background:</b>	Ubiquitin is a small, highly conserved protein found in all eukaryotes. Within the cell, ubiquitin is covalently linked to substrate proteins, often targeting them for degradation via the ubiquitin pathway.
<b>Synonyms:</b>	Ubiquitin
<b>Immunogen:</b>	KLH-conjugated synthetic peptide (18 aa from N terminal section) of Ubiquitin derived from <i>Arabidopsis thaliana</i> UBQ2 (AT2G36170), UBQ1 (AT3G52590), UBQ7 (AT2G35635), UBQ16 (AT1G23410), UBQ6 (AT2G47110), UBQ5 (AT3G62250), UBQ14 (AT4G02890), UBQ11 (AT4G05050), UBQ3 (AT5G03240), UBQ13 (AT1G65350), UBQ9 (AT5G37640), RUB1 (AT1G31340), UBQ12 (AT1G55060), UBQ10 (AT4G05320), UBQ4 (AT5G20620).
<b>Form:</b>	Lyophilized
<b>Quantity:</b>	150 µg
<b>Purification:</b>	Immunogen affinity purified
<b>Reconstitution:</b>	Reconstitution with 150 µl of 0.01 M sterile PBS. "Note: please spin tube briefly prior to opening it to avoid any losses that might occur from lyophilized material adhering to the cap or sides of the tube".
<b>Stability &amp; Storage:</b>	Use a manual defrost freezer and avoid repeated freeze-thaw cycles. 12 months from date of receipt, -20 to -70°C as supplied. 6 months, -20 to -70°C under sterile conditions after reconstitution. 1 month, 2 to 8°C under sterile conditions after reconstitution.
<b>Shipping:</b>	The product is shipped at 4°C. Upon receipt, store it immediately at the temperature recommended above.

## Application Information

<b>Recommended Dilution:</b>	Western Blot (1:1000-1:2000) Note: Optimal dilutions/concentrations should be determined by the end user.
<b>Expected/apparent MW:</b>	15 kDa

Research Use Only

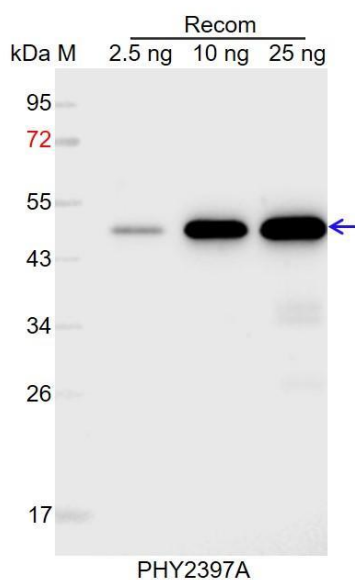
### Predicted Reactivity:

Among species analyzed, the sequence of the synthetic peptide used for immunization is 100% homologues with the sequence in *Zea mays*, *Solanum tuberosum*, *Brassica napus*, *Vitis vinifera*, *Medicago truncatula*, *Triticum aestivum*, *Gossypium raimondii*, *Oryza sativa*, *Solanum lycopersicum*, *Populus trichocarpa*, *Nicotiana tabacum*, *Sorghum bicolor*, *Glycine max*, *Panicum virgatum*, *Brassica rapa*, *Spinacia oleracea*, *Hordeum vulgare*.

The sequence of the synthetic peptide used for immunization is 94% (17/18) homologues with the sequence in UBQ8 (AT3G09790).

For more species homologues information, please contact tech support at [tech@phytoab.com](mailto:tech@phytoab.com).

### Application Example



Recom: 2.5 ng, 10 ng and 25 ng recombinant protein containing the peptide for immunization and having a molecular mass of 50 kDa.

**Electrophoresis:** 12% SDS-PAGE

**Transfer:** blotting to NC (nitrocellulose) membrane for 1 h.

**Blocking:** 5% skim milk at RT or 4°C for 1 h.

**Primary antibody:** 1:1000 dilution overnight at 4°C.

**Secondary antibody:** 1:10000 dilution using Goat Anti-Rabbit IgG H&L (HRP) (Cat# PHY6000).

**Detection:** using chemiluminescence substrate and image were captured with CCD camera.