

Anti-Nitrogen regulatory protein P-II homolog, C-terminal antibody

Catalog: PHY4315A

Product Information

Description:	Rabbit polyclonal antibody
Background:	Os05g0133100 participates in sensing carbon and organic nitrogen status and regulates some steps of primary carbon and nitrogen metabolism.
Synonyms:	Os05g0133100
Immunogen:	KLH-conjugated synthetic peptide (16 aa from C terminal section) derived from <i>Oryza sativa</i> Os05g0133100.
Form:	Lyophilized
Quantity:	150 µg
Purification:	Immunogen affinity purified
Reconstitution:	Reconstitution with 150 µl of 0.01 M sterile PBS. "Note: please spin tube briefly prior to opening it to avoid any losses that might occur from lyophilized material adhering to the cap or sides of the tube".
Stability & Storage:	Use a manual defrost freezer and avoid repeated freeze-thaw cycles. 12 months from date of receipt, -20 to -70°C as supplied. 6 months, -20 to -70°C under sterile conditions after reconstitution. 1 month, 2 to 8°C under sterile conditions after reconstitution.
Shipping:	The product is shipped at 4°C. Upon receipt, store it immediately at the temperature recommended above.

Application Information

Recommended Dilution:	Western Blot (1:1000-1:2000) Note: Optimal dilutions/concentrations should be determined by the end user.
Expected / apparent MW:	23 / 16 kDa
Confirmed Reactivity:	<i>Oryza sativa</i>
Predicted Reactivity:	Among species analyzed, the sequence of the synthetic peptide used for immunization is 100% homologues with the sequence in

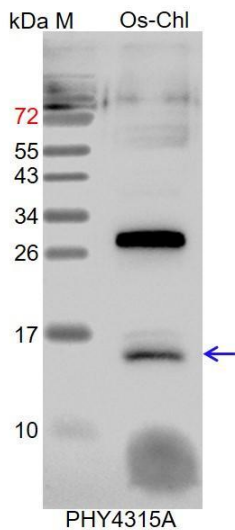
Research Use Only

Cucumis sativus, and 80-99% homologues with the sequence in *Populus trichocarpa*, *Glycine max*, *Medicago truncatula*, *Solanum lycopersicum*, *Nicotiana tabacum*, *Solanum tuberosum*, *Vitis vinifera*, *Arabidopsis thaliana*, *Brassica napus*, *Brassica rapa*, *Physcomitrium patens*, *Panicum virgatum*, *Setaria viridis*, *Sorghum bicolor*.

For more species homologues information, please contact tech support at tech@phytoab.com.

Application Example

Example 1



Os-Chl: 5 μ l total chloroplast protein from *Oryza Sativa*.

Electrophoresis: 15% SDS-PAGE.

Transfer: blotting to NC (nitrocellulose) membrane for 1h.

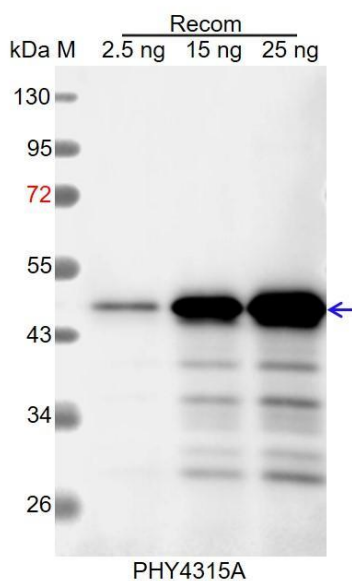
Blocking: 5% skim milk at RT or 4°C for 1h.

Primary antibody: 1:2000 dilution overnight at 4°C.

Secondary antibody: 1:10000 dilution using Goat Anti-Rabbit IgG H&L (HRP) (Cat# PHY6000).

Detection: using chemiluminescence substrate and image were captured with CCD camera.

Example 2



Recom: 2.5 ng, 15 ng and 25 ng recombinant protein containing the peptide for immunization and having a molecular mass of 48 kDa.

Electrophoresis: 12% SDS-PAGE

Transfer: blotting to NC (nitrocellulose) membrane for 1 h.

Blocking: 5% skim milk at RT or 4°C for 1 h.

Primary antibody: 1:1000 dilution overnight at 4°C.

Secondary antibody: 1:10000 dilution using Goat Anti-Rabbit IgG H&L (HRP) (Cat# PHY6000).

Detection: using chemiluminescence substrate and image were captured with CCD camera.