

Anti-Peroxisome biogenesis protein 5, C-terminal antibody

Catalog: PHY1473S

Product Information

Description:	Rabbit polyclonal antibody
Background:	PEX5 is the peroxisomal targeting signal type 1 receptor that facilitates peroxisomal protein translocation. In the peroxisome matrix, PEX5 releases its cargo and is recycled to the cytosol in a process dependent on PEX1 (AT5G08470), PEX4 (AT5G25760), PEX6 (AT1G03000) and PEX22 (AT3G21865). It is also involved, in conjunction with PEX7 (AT1G29260), in PTS1- and PTS2-dependent peroxisomal protein import.
Synonyms:	PEX5, ARABIDOPSIS PEROXIN 5, ATPEX5, EMB2790, EMBRYO DEFECTIVE 2790, PEROXIN 5,
Immunogen:	KLH-conjugated synthetic peptide (16 aa from C terminal section) derived from Arabidopsis thaliana PEX5 (AT5G56290).
Form:	Lyophilized
Quantity:	150 µg
Purification:	Serum Peptide affinity form antibody available upon request at info@phytoab.com .
Reconstitution:	Reconstitution with 150 µl of sterile water. "Note: please spin tube briefly prior to opening it to avoid any losses that might occur from lyophilized material adhering to the cap or sides of the tube".
Stability & Storage:	Use a manual defrost freezer and avoid repeated freeze-thaw cycles. 12 months from date of receipt, -20 to -70°C as supplied. 6 months, -20 to -70°C under sterile conditions after reconstitution. 1 month, 2 to 8°C under sterile conditions after reconstitution.
Shipping:	The product is shipped at 4°C. Upon receipt, store it immediately at the temperature recommended above.

Application Information

Recommended Dilution:	Western Blot (1:1000-1:2000) Note: Optimal dilutions/concentrations should be determined by the end user.
------------------------------	--

Research Use Only

Expected / apparent MW:

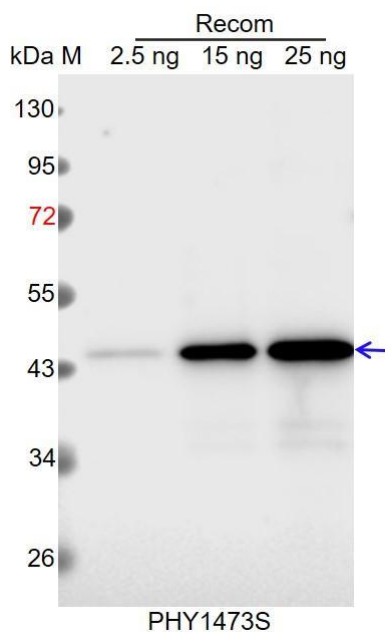
81 kDa

Predicted Reactivity:

Among species analyzed, the sequence of the synthetic peptide used for immunization is 100% homologous with the sequence in *Brassica rapa*, *Brassica napus*, and 80-99% homologous with the sequence in *Glycine max*, *Medicago truncatula*, *Hordeum vulgare*, *Oryza sativa*, *Triticum aestivum*, *Solanum lycopersicum*, *Nicotiana tabacum*, *Populus trichocarpa*, *Cucumis sativus*, *Gossypium raimondii*, *Vitis vinifera*, *Solanum tuberosum*, *Spinacia oleracea*, *Zea mays*, *Panicum virgatum*, *Sorghum bicolor*, *Setaria viridis*.

For more species homologues information, please contact tech support at tech@phytoab.com.

Application Example



Recom: 2.5 ng, 15 ng and 25 ng recombinant protein containing the peptide for immunization and having a molecular mass of 45 kDa.

Electrophoresis: 12% SDS-PAGE

Transfer: blotting to NC (nitrocellulose) membrane for 1 h.

Blocking: 5% skim milk at RT or 4°C for 1 h.

Primary antibody: 1:1000 dilution overnight at 4°C.

Secondary antibody: 1:10000 dilution using Goat Anti-Rabbit IgG H&L (HRP) (Cat# PHY6000).

Detection: using chemiluminescence substrate and image were captured with CCD camera.