

Anti-Transcription termination factor MTERF8, chloroplastic antibody

Catalog: PHY3093A

Product Information

Description:	Rabbit polyclonal antibody
Background:	PTAC15 is a member of the Mitochondrial Transcription Termination Factor Family and is involved in the transcription termination of the chloroplast gene psbJ1. pTAC15 specifically binds to the 3'-terminal region of psbJ.
Synonyms:	PTAC15, MITOCHONDRIAL TRANSCRIPTION TERMINATOR FACTOR 8, MTERF8, PLASTID TRANSCRIPTIONALLY ACTIVE 15
Immunogen:	KLH-conjugated synthetic peptide (17 aa from Central section) derived from <i>Arabidopsis thaliana</i> PTAC15 (AT5G54180).
Form:	Lyophilized
Quantity:	150 µg
Purification:	Immunogen affinity purified
Reconstitution:	Reconstitution with 150µl of 0.01 M sterile PBS. "Note: please spin tube briefly prior to opening it to avoid any losses that might occur from lyophilized material adhering to the cap or sides of the tube".
Stability & Storage:	Use a manual defrost freezer and avoid repeated freeze-thaw cycles. 12 months from date of receipt, -20 to -70°C as supplied. 6 months, -20 to -70°C under sterile conditions after reconstitution. 1 month, 2 to 8°C under sterile conditions after reconstitution.
Shipping:	The product is shipped at 4°C. Upon receipt, store it immediately at the temperature recommended above.

Application Information

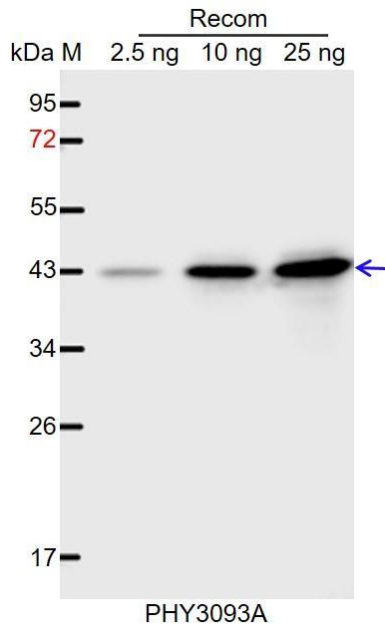
Recommended Dilution:	Western Blot (1:1000-1:2000) Note: Optimal dilutions/concentrations should be determined by the end user.
Expected / apparent MW:	56 kDa
Predicted Reactivity:	Among species analyzed, the sequence of the synthetic peptide used for immunization is 100% homologues with the sequence in

Research Use Only

Brassica napus, *Brassica rapa*, and 80-99% homologues with the sequence in *Populus trichocarpa*, *Gossypium raimondii*.

For more species homologues information, please contact tech support at tech@phytoab.com.

Application Example



Recom: 2.5 ng, 10 ng and 25 ng recombinant protein containing the peptide for immunization and having a molecular mass of 43 kDa.

Electrophoresis: 12% SDS-PAGE

Transfer: blotting to NC (nitrocellulose) membrane for 1 h.

Blocking: 5% skim milk at RT or 4 °C for 1 h.

Primary antibody: 1:1000 dilution overnight at 4 °C.

Secondary antibody: 1:10000 dilution using Goat Anti-Rabbit IgG H&L (HRP) (Cat# PHY6000).

Detection: using chemiluminescence substrate and image were captured with CCD camera.