

# Anti-Glyceraldehyde-3-phosphate dehydrogenase GAPC1/2, cytosolic antibody

Catalog: PHY3070A

## Product Information

<b>Description:</b>	Rabbit polyclonal antibody
<b>Background:</b>	Glyceraldehyde 3-phosphate dehydrogenase (GAPDH) is an enzyme of ~37kDa that catalyzes the sixth step of glycolysis and thus serves to break down glucose for energy and carbon molecules. Plants contain both cytosolic and chloroplastic GAPDHs (glyceraldehyde-3-phosphate dehydrogenases). In <i>Arabidopsis thaliana</i> , cytosolic GAPDH is involved in the glycolytic pathway and is represented by two differentially expressed isoforms (GAPC1 AT3G04120 and GAPC2 AT1G13440) that are 98% identical in amino acid sequence.
<b>Synonyms:</b>	GAPC1/2, GAPC-1/2
<b>Immunogen:</b>	KLH-conjugated synthetic peptide (17 aa from N terminal section) derived from <i>Arabidopsis thaliana</i> GAPC1 (AT3G04120) and GAPC2 (AT1G13440).
<b>Form:</b>	Lyophilized
<b>Quantity:</b>	150 µg
<b>Purification:</b>	Immunogen affinity purified
<b>Reconstitution:</b>	Reconstitution with 150 µl of 0.01 M sterile PBS. "Note: please spin tube briefly prior to opening it to avoid any losses that might occur from lyophilized material adhering to the cap or sides of the tube".
<b>Stability &amp; Storage:</b>	Use a manual defrost freezer and avoid repeated freeze-thaw cycles. 12 months from date of receipt, -20 to -70°C as supplied. 6 months, -20 to -70°C under sterile conditions after reconstitution. 1 month, 2 to 8°C under sterile conditions after reconstitution.
<b>Shipping:</b>	The product is shipped at 4°C. Upon receipt, store it immediately at the temperature recommended above.

## Application Information

<b>Recommended Dilution:</b>	Western Blot (1:1000-1:4000) Note: Optimal dilutions/concentrations should be determined by the end user.
<b>Expected / apparent MW:</b>	37 kDa

Research Use Only

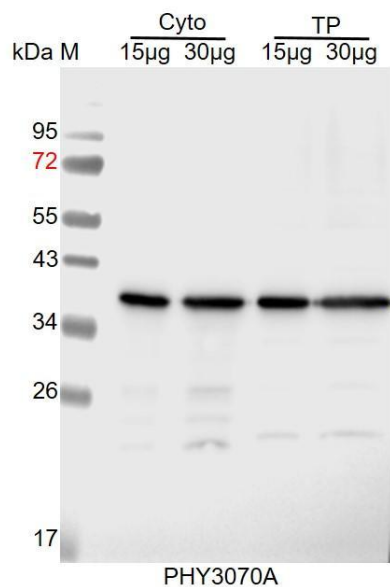
**Confirmed Reactivity:**

*Arabidopsis thaliana*

**Predicted Reactivity:**

Among species analyzed, the sequence of the synthetic peptide used for immunization is 100% homologues with the sequence in *Solanum tuberosum*, *Glycine max*, *Brassica napus*, *Brassica rapa*, *Medicago truncatula*, *Oryza sativa*, *Vitis vinifera*, *Spinacia oleracea*, *Zea mays*, *Triticum aestivum*, *Gossypium raimondii*, *Physcomitrium patens*, *Populus trichocarpa*, *Nicotiana tabacum*, *Solanum lycopersicum*.  
For more species homologues information, please contact tech support at [tech@phytoab.com](mailto:tech@phytoab.com).

## Application Example



Cyto: 15 µg and 30 µg cytosolic protein from *Arabidopsis thaliana*.

TP: 15 µg and 30 µg total protein from *Arabidopsis thaliana*.

**Electrophoresis:** 15% SDS-PAGE

**Transfer:** blotting to NC (nitrocellulose) membrane for 1 h.

**Blocking:** 5% skim milk at RT or 4°C for 1 h.

**Primary antibody:** 1:4000 dilution overnight at 4°C.

**Secondary antibody:** 1:10000 dilution using Goat Anti-Rabbit IgG &L (HRP) (Cat# PHY6000).

**Detection:** using chemiluminescence substrate and image were captured with CCD camera.