

Anti-Calreticulin-3, N-terminal antibody

Catalog: PHY3470A

Product Information

Description:	Rabbit polyclonal antibody
Background:	Calreticulin (CRT) is an endoplasmic reticulum (ER)-localized chaperone-like lectin that plays a crucial role in promoting the folding and maturation of newly synthesized glycoproteins and retaining incompletely/mis-folded proteins in the ER through its specific binding to monoglucosylated asparagine-linked glycans. And the CRTs are including CRT1 (AT1G56340), CRT2 (AT1G09210), CRT3 (AT1G08450).
Synonyms:	CRT3, CALRETICULIN 3, EBS2, EMS-MUTAGENIZED BRI1 SUPPRESSOR 2, PRIORITY IN SWEET LIFE 1, PSL1
Immunogen:	KLH-conjugated synthetic peptide (14 aa from N terminal section) derived from <i>Arabidopsis thaliana</i> CRT3 (AT1G08450).
Form:	Lyophilized
Quantity:	150 µg
Purification:	Immunogen affinity purified
Reconstitution:	Reconstitution with 150 µl of 0.01 M sterile PBS. "Note: please spin tube briefly prior to opening it to avoid any losses that might occur from lyophilized material adhering to the cap or sides of the tube".
Stability &	Use a manual defrost freezer and avoid repeated freeze-thaw cycles.
Storage:	12 months from date of receipt, -20 to -70°C as supplied. 6 months, -20 to -70°C under sterile conditions after reconstitution. 1 month, 2 to 8°C under sterile conditions after reconstitution.
Shipping:	The product is shipped at 4°C. Upon receipt, store it immediately at the temperature recommended above.

Application Information

Recommended Dilution:	Western Blot (1:1000-1:2000) Note: Optimal dilutions/concentrations should be determined by the end user.
Expected / apparent MW:	50 kDa

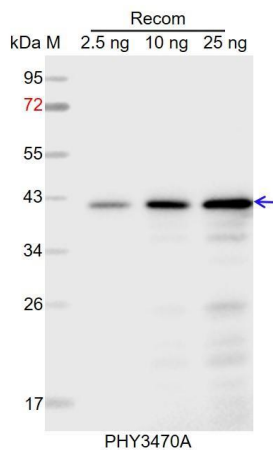
Research Use Only

Predicted Reactivity:

Among species analyzed, the sequence of the synthetic peptide used for immunization is 100% homologues with the sequence in *Brassica napus*, *Brassica rapa*, and 80-99% homologues with the sequence in *Glycine max*, *Spinacia oleracea*, *Oryza sativa*, *Cucumis sativus*, *Hordeum vulgare*, *Triticum aestivum*, *Gossypium raimondii*, *Solanum lycopersicum*, *Solanum tuberosum*, *Nicotiana tabacum*, *Populus trichocarpa*, *Medicago truncatula*, *Zea mays*, *Panicum virgatum*, *Sorghum bicolor*, *Setaria viridis*, *Vitis vinifera*.

For more species homologues information, please contact tech support at tech@phytoab.com.

Application Example



Recom: 2.5 ng, 15 ng and 25 ng recombinant protein containing the peptide for immunization and having a molecular mass of 42 kDa.

Electrophoresis: 12% SDS-PAGE

Transfer: blotting to NC (nitrocellulose) membrane for 1 h.

Blocking: 5% skim milk at RT or 4°C for 1 h.

Primary antibody: 1:1000 dilution overnight at 4°C.

Secondary antibody: 1:10000 dilution using Goat Anti-Rabbit IgG H&L (HRP) (Cat# PHY6000).

Detection: using chemiluminescence substrate and image were captured with CCD camera.