

Anti-Plasma membrane aquaporin 2/3 antibody

Catalog: PHY0176S

Product Information

| | |
|---------------------------------|---|
| Description: | Rabbit polyclonal antibody |
| Background: | PIP2/3 are members of the plasma membrane intrinsic protein PIP. They may be involved in the osmoregulation in plants under high osmotic stress such as under a high salt condition. |
| Synonyms: | PIP2/3 |
| Immunogen: | KLH-conjugated synthetic peptide (14 aa from C terminal section) derived from <i>Arabidopsis thaliana</i> PIP3A (AT4G35100), PIP3B (AT2G16850), PIP2D (AT3G54820), PIP2A (AT3G53420). |
| Form: | Lyophilized |
| Quantity: | 150 µg |
| Purification: | Serum Peptide affinity form antibody available upon request at info@phytoab.com . |
| Reconstitution: | Reconstitution with 150 µl of sterile water. "Note: please spin tube briefly prior to opening it to avoid any losses that might occur from lyophilized material adhering to the cap or sides of the tube". |
| Stability & Storage: | Use a manual defrost freezer and avoid repeated freeze-thaw cycles. 12 months from date of receipt, -20 to -70°C as supplied. 6 months, -20 to -70°C under sterile conditions after reconstitution. 1 month, 2 to 8°C under sterile conditions after reconstitution. |
| Shipping: | The product is shipped at 4°C. Upon receipt, store it immediately at the temperature recommended above. |

Application Information

| | |
|------------------------------|---|
| Recommended Dilution: | Western Blot (1:1000-1:2000) Note: Optimal dilutions/concentrations should be determined by the end user. |
| Expected/apparent MW: | 30 kDa |
| Predicted Reactivity: | Among species analyzed, the sequence of the synthetic peptide used for immunization is 100% homologues with the sequence in <i>Populus trichocarpa</i> , <i>Medicago truncatula</i> , <i>Gossypium raimondii</i> , <i>Glycine</i> |

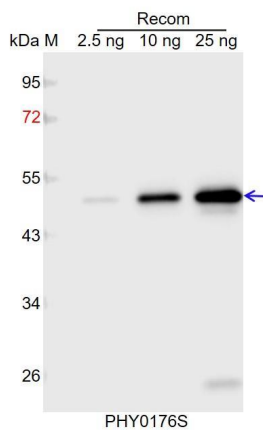
Research Use Only

max, *Triticum aestivum*, *Brassica napus*, *Spinacia oleracea*, *Brassica rapa*, *Hordeum vulgare*, *Zea mays*, *Setaria viridis*, *Nicotiana tabacum*, *Solanum tuberosum*, *Solanum lycopersicum*, *Cucumis sativus*, *Vitis vinifera*.

The sequence of the synthetic peptide used for immunization is 93% homologues with the sequence in PIP2B (AT2G37170), PIP2C (AT2G37180), PIP2F (AT5G60660), PIP2E (AT2G39010), PIP1C (AT1G01620), PIP1D (AT4G23400), PIP1E (AT4G00430), and 86% homologues with the sequence in PIP1B (AT2G45960), PIP1A (AT3G61430).

For more species homologues information, please contact tech support at tech@phytoab.com.

Application Example



Recom: 2.5 ng, 10 ng and 25 ng recombinant protein containing the peptide for immunization and having a molecular mass of 50 kDa.

Electrophoresis: 12% SDS-PAGE

Transfer: blotting to NC (nitrocellulose) membrane for 1 h.

Blocking: 5% skim milk at RT or 4°C for 1 h.

Primary antibody: 1:1000 dilution overnight at 4°C.

Secondary antibody: 1:10000 dilution using Goat Anti-Rabbit IgG H&L (HRP) (Cat# PHY6000).

Detection: using chemiluminescence substrate and image were captured with CCD camera.