

Anti-Probable histone H2A antibody

Catalog: PHY7395A

Product Information

Description:	Rabbit polyclonal antibody
Background:	H2A is histone2A protein.
Synonyms:	H2A
Immunogen:	KLH-conjugated synthetic peptide (16 aa from C terminal section) derived from <i>Arabidopsis thaliana</i> HTA1 (AT5G54640), HTA2 (AT4G27230), HTA3 (AT1G54690), HTA5 (AT1G08880), HTA10 (AT1G51060) and HTA13 (AT3G20670).
Form:	Lyophilized
Quantity:	150 µg
Purification:	Immunogen affinity purified
Reconstitution:	Reconstitution with 150 µl of 0.01 M sterile PBS. "Note: please spin tube briefly prior to opening it to avoid any losses that might occur from lyophilized material adhering to the cap or sides of the tube".
Stability & Storage:	Use a manual defrost freezer and avoid repeated freeze-thaw cycles. 12 months from date of receipt, -20 to -70°C as supplied. 6 months, -20 to -70°C under sterile conditions after reconstitution. 1 month, 2 to 8°C under sterile conditions after reconstitution.
Shipping:	The product is shipped at 4°C. Upon receipt, store it immediately at the temperature recommended above.

Application Information

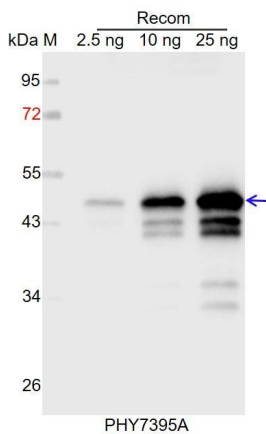
Recommended Dilution:	Western Blot (1:1000-1:2000); IP Note: Optimal dilutions/concentrations should be determined by the end user.
Expected / apparent MW:	15 kDa
Predicted Reactivity:	Among species analyzed, the sequence of the synthetic peptide used for immunization is 100% homologues with the sequence in <i>Medicago truncatula</i> , <i>Brassica napus</i> , <i>Glycine max</i> , <i>Cucumis sativus</i> , <i>Vitis vinifera</i> , <i>Gossypium raimondii</i> , <i>Populus trichocarpa</i> , <i>Brassica rapa</i> , <i>Physcomitrium patens</i> , <i>Nicotiana tabacum</i> , <i>Solanum lycopersicum</i> ,

Research Use Only

Solanum tuberosum, Spinacia oleracea, Physcomitrium patens, Triticum aestivum, Hordeum vulgare, Sorghum bicolor, Zea mays, Setaria viridis, Panicum virgatum.

For more species homologues information, please contact tech support at tech@phytoab.com.

Application Example



Recom: 2.5 ng, 10 ng and 25 ng recombinant protein containing the peptide for immunization and having a molecular mass of 48 kDa.

Electrophoresis: 12% SDS-PAGE

Transfer: blotting to NC (nitrocellulose) membrane for 1 h.

Blocking: 5% skim milk at RT or 4°C for 1 h.

Primary antibody: 1:1000 dilution overnight at 4°C.

Secondary antibody: 1:10000 dilution using Goat Anti-Rabbit IgG H&L (HRP) (Cat# PHY6000).

Detection: using chemiluminescence substrate and image were captured with CCD camera.