

Anti-26S proteasome regulatory subunit 4 homolog A antibody

Catalog: PHY3260A

Product Information

| | |
|---------------------------------|--|
| Description: | Rabbit polyclonal antibody |
| Background: | RPT2A interacts with transit peptides of proteins targeted to the chloroplast, and may be involved in the degradation of unimported plastid protein precursors. It is required for the maintenance of postembryonic root and shoot meristems. And it acts redundantly with RPT2B in the regulation of gametogenesis. |
| Synonyms: | RPT2A, 26S proteasome AAA-ATPase subunit RPT2a, 26S proteasome subunit 4 homolog A |
| Immunogen: | KLH-conjugated synthetic peptide (18 aa from C terminal section) derived from <i>Arabidopsis thaliana</i> RPT2A (AT4G29040). |
| Form: | Lyophilized |
| Quantity: | 150 µg |
| Purification: | Immunogen affinity purified |
| Reconstitution: | Reconstitution with 150 µl of 0.01 M sterile PBS. "Note: please spin tube briefly prior to opening it to avoid any losses that might occur from lyophilized material adhering to the cap or sides of the tube". |
| Stability & Storage: | Use a manual defrost freezer and avoid repeated freeze-thaw cycles. 12 months from date of receipt, -20 to -70°C as supplied. 6 months, -20 to -70°C under sterile conditions after reconstitution. 1 month, 2 to 8°C under sterile conditions after reconstitution. |
| Shipping: | The product is shipped at 4°C. Upon receipt, store it immediately at the temperature recommended above. |

Application Information

| | |
|--------------------------------|--|
| Recommended Dilution: | Western Blot (1:1000-1:2000) Note: Optimal dilutions/concentrations should be determined by the end user. |
| Expected / apparent MW: | 49 kDa |

Research Use Only

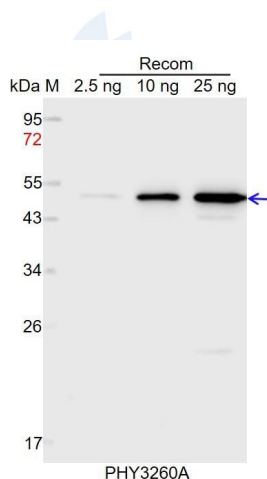
Predicted Reactivity:

Among species analyzed, the sequence of the synthetic peptide used for immunization is 100% homologues with the sequence in *Zea mays*, *Vitis vinifera*, *Setaria viridis*, *Panicum virgatum*, *Oryza sativa*, *Hordeum vulgare*, *Triticum aestivum*, *Sorghum bicolor*, *Cucumis sativus*, *Populus trichocarpa*, *Physcomitrium patens*, *Gossypium raimondii*, *Medicago truncatula*, *Solanum lycopersicum*, *Spinacia oleracea*, *Nicotiana tabacum*, *Solanum tuberosum*, *Chlamydomonas reinhardtii*, *Glycine max*, and 80-99% homologues with the sequence in *Brassica rapa*, *Brassica napus*.

The sequence of the synthetic peptide used for immunization is 94% (15 / 16) homologues with the sequence in RPT2b (AT2G20140).

For more species homologues information, please contact tech support at tech@phytoab.com.

Application Example



Recom: 2.5 ng, 15 ng and 25 ng recombinant protein containing the peptide for immunization and having a molecular mass of 50 kDa.

Electrophoresis: 12% SDS-PAGE

Transfer: blotting to NC (nitrocellulose) membrane for 1 h.

Blocking: 5% skim milk at RT or 4°C for 1 h.

Primary antibody: 1:1000 dilution overnight at 4°C.

Secondary antibody: 1:10000 dilution using Goat Anti-Rabbit IgG H&L (HRP) (Cat# PHY6000).

Detection: using chemiluminescence substrate and image were captured with CCD camera.