

Anti-Aquaporin PIP2;1, N-terminal antibody

Catalog: PHY1329S

Product Information

| | |
|---------------------------------|--|
| Description: | Rabbit polyclonal antibody |
| Background: | PIP2;1 is a member of the plasma membrane intrinsic protein PIP. They may be involved in the osmoregulation in plants under high osmotic stress such as under a high salt condition. |
| Synonyms: | PIP2-1, PIP2;1, ATPIP2;1, PIP2, PIP2A, PLASMA MEMBRANE INTRINSIC PROTEIN 2, PLASMA MEMBRANE INTRINSIC PROTEIN 2;1, PLASMA MEMBRANE INTRINSIC PROTEIN 2A |
| Immunogen: | KLH-conjugated synthetic peptide (16 aa from N terminal section) derived from <i>Arabidopsis thaliana</i> PIP2-1 (AT3G53420). |
| Form: | Lyophilized |
| Quantity: | 150 µg |
| Purification: | Serum |
| Reconstitution: | Peptide affinity form antibody available upon request at info@phytoab.com . Reconstitution with 150 µl of sterile water. "Note: please spin tube briefly prior to opening it to avoid any losses that might occur from lyophilized material adhering to the cap or sides of the tube". |
| Stability & Storage: | Use a manual defrost freezer and avoid repeated freeze-thaw cycles. 12 months from date of receipt, -20 to -70°C as supplied. 6 months, -20 to -70°C under sterile conditions after reconstitution. 1 month, 2 to 8°C under sterile conditions after reconstitution. |
| Shipping: | The product is shipped at 4°C. Upon receipt, store it immediately at the temperature recommended above. |

Application Information

| | |
|--------------------------------|---|
| Recommended Dilution: | Western Blot (1:1000-1:2000) Note: Optimal dilutions/concentrations should be determined by the end user. |
| Expected / apparent MW: | 30 kDa |
| Predicted Reactivity: | Among species analyzed, the sequence of the synthetic peptide used for immunization is 80-99% homologues with the sequence in |

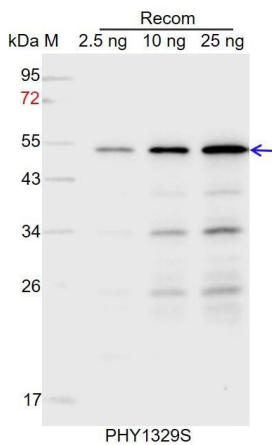
Research Use Only

Brassica napus.

The sequence of the synthetic peptide used for immunization is 92% homologues with the sequence in PIP2;2 (AT2G37170).

For more species homologues information, please contact tech support at tech@phytoab.com.

Application Example



Recom: 2.5 ng, 10 ng and 25 ng recombinant protein containing the peptide for immunization and having a molecular mass of 52 kDa.

Electrophoresis: 12% SDS-PAGE

Transfer: blotting to NC (nitrocellulose) membrane for 1 h.

Blocking: 5% skim milk at RT or 4°C for 1 h.

Primary antibody: 1:1000 dilution overnight at 4°C.

Secondary antibody: 1:10000 dilution using Goat Anti-Rabbit IgG H&L (HRP) (Cat# PHY6000).

Detection: using chemiluminescence substrate and image were captured with CCD camera.