

# Anti-26S proteasome regulatory subunit 6A homolog A/B, C-terminal antibody

Catalog: PHY2949A

## Product Information

<b>Description:</b>	Rabbit polyclonal antibody
<b>Background:</b>	RPT5a (Regulatory Particle 5a), one of the six AAA-ATPases of the proteasome regulatory particle. It's essential for gametophyte development. In Arabidopsis, the RPT5 subunit is encoded by two highly homologous genes, RPT5a and RPT5b. RPT5a and RPT5b show accession-dependent functional redundancy.
<b>Synonyms:</b>	RPT5A/B, ATS6A.2, REGULATORY PARTICLE TRIPLE-A ATPASE 5A, RPT5A, 26S PROTEASOME AAA-ATPASE SUBUNIT RPT5B, RPT5B
<b>Immunogen:</b>	KLH-conjugated synthetic peptide (15 aa from C terminal section) derived from <i>Arabidopsis thaliana</i> RPT5A (AT3G05530), RPT5B (AT1G09100).
<b>Form:</b>	Lyophilized
<b>Quantity:</b>	150 µg
<b>Purification:</b>	Immunogen affinity purified
<b>Reconstitution:</b>	Reconstitution with 150 µl of 0.01 M sterile PBS. "Note: please spin tube briefly prior to opening it to avoid any losses that might occur from lyophilized material adhering to the cap or sides of the tube".
<b>Stability &amp; Storage:</b>	Use a manual defrost freezer and avoid repeated freeze-thaw cycles. 12 months from date of receipt, -20 to -70°C as supplied. 6 months, -20 to -70°C under sterile conditions after reconstitution. 1 month, 2 to 8°C under sterile conditions after reconstitution.
<b>Shipping:</b>	The product is shipped at 4°C. Upon receipt, store it immediately at the temperature recommended above.

## Application Information

<b>Recommended Dilution:</b>	Western Blot (1:1000-1:2000) Note: Optimal dilutions/concentrations should be determined by the end user.
------------------------------	--

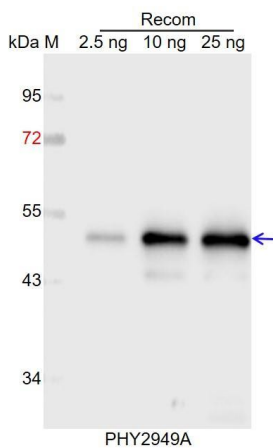
Research Use Only

**Expected / apparent MW:** 47 kDa

**Predicted Reactivity:** Among species analyzed, the sequence of the synthetic peptide used for immunization is 100% homologues with the sequence in *Glycine max*, *Brassica napus*, *Gossypium raimondii*, *Spinacia oleracea*, *Brassica rapa*, *Medicago truncatula*, *Cucumis sativus*, *Solanum lycopersicum*, *Nicotiana tabacum*, *Populus trichocarpa*, *Solanum tuberosum*, and 80-99% homologues with the sequence in *Hordeum vulgare*, *Triticum aestivum*, *Panicum virgatum*, *Setaria viridis*, *Oryza sativa*, *Zea mays*, *Sorghum bicolor*, *Vitis vinifera*.

For more species homologues information, please contact tech support at [tech@phytoab.com](mailto:tech@phytoab.com).

## Application Example



Recom: 2.5 ng, 10 ng and 25 ng recombinant protein containing the peptide for immunization and having a molecular mass of 50 kDa.

**Electrophoresis:** 12% SDS-PAGE

**Transfer:** blotting to NC (nitrocellulose) membrane for 1 h.

**Blocking:** 5% skim milk at RT or 4°C for 1 h.

**Primary antibody:** 1:1000 dilution overnight at 4°C.

**Secondary antibody:** 1:10000 dilution using Goat Anti-Rabbit IgG H&L (HRP) (Cat# PHY6000)

**Detection:** using chemiluminescence substrate and image were captured with CCD camera.