

Anti-Catalase-3, C-terminal antibody

Catalog: PHY1534A

Product Information

Description:	Rabbit polyclonal antibody
Background:	Catalase is one of the most important antioxidant enzymes that catalyze the decomposition of H ₂ O ₂ . CAT3 has been found to interact with several proteins, such as nucleoside diphosphate kinase, NDK1 (AT4G09320), class 3 sucrose-nonfermenting 1-related kinase, SOS2 (AT5G35410), and LESION SIMULATING DISEASE1, LSD1 (AT4G20380).
Synonyms:	CAT3, ATCAT3, CATALASE 3, REPRESSOR OF GSNOR1, ROG1, SEN2, SENESENCE 2
Immunogen:	KLH-conjugated synthetic peptide (15 aa from C terminal section) derived from <i>Arabidopsis thaliana</i> CAT3 (AT1G20620).
Form:	Lyophilized
Quantity:	150 µg
Purification:	Immunogen affinity purified
Reconstitution:	Reconstitution with 150 µl of 0.01 M sterile PBS. "Note: please spin tube briefly prior to opening it to avoid any losses that might occur from lyophilized material adhering to the cap or sides of the tube".
Stability & Storage:	Use a manual defrost freezer and avoid repeated freeze-thaw cycles. 12 months from date of receipt, -20 to -70°C as supplied. 6 months, -20 to -70°C under sterile conditions after reconstitution. 1 month, 2 to 8°C under sterile conditions after reconstitution.
Shipping:	The product is shipped at 4°C. Upon receipt, store it immediately at the temperature recommended above.

Application Information

Recommended Dilution:	Western Blot (1:1000-1:2000) Note: Optimal dilutions/concentrations should be determined by the end user.
Expected/apparent MW:	57 kDa
Confirmed Reactivity:	<i>Arabidopsis thaliana</i>

Research Use Only

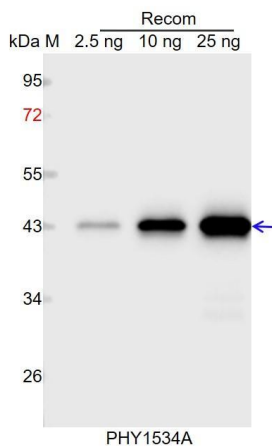
Predicted Reactivity:

Among species analyzed, the sequence of the synthetic peptide used for immunization is 80-99% homologues with the sequence in *Brassica rapa*, *Brassica napus*, *Cucumis sativus*, *Glycine max*, *Triticum aestivum*, *Hordeum vulgare*, *Medicago truncatula*, *Nicotiana tabacum*, *Solanum lycopersicum*, *Oryza sativa*, *Populus trichocarpa*, *Gossypium raimondii*, *Solanum tuberosum*.

For more species homologues information, please contact tech support at tech@phytoab.com.

Application Example

Example1:



Recom: 2.5 ng, 10 ng and 25 ng recombinant protein containing the peptide for immunization and having a molecular mass of 48 kDa.

Electrophoresis: 12% SDS-PAGE

Transfer: blotting to NC (nitrocellulose) membrane for 1 h.

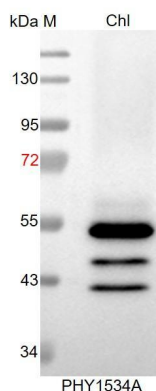
Blocking: 5% skim milk at RT or 4°C for 1 h.

Primary antibody: 1:1000 dilution overnight at 4°C.

Secondary antibody: 1:10000 dilution using Goat Anti-Rabbit IgG H&L (HRP) (Cat# PHY6000).

Detection: using chemiluminescence substrate and image were captured with CCD camera.

Example2:



Chl: 40 µg total chloroplast protein from *Arabidopsis thaliana*.

Electrophoresis: 12% SDS-PAGE

Transfer: blotting to NC (nitrocellulose) membrane for 1 h.

Blocking: 5% skim milk at RT or 4°C for 1 h.

Primary antibody: 1:2000 dilution overnight at 4°C.

Secondary antibody: 1:10000 dilution using Goat Anti-Rabbit IgG H&L (HRP) (Cat# PHY6000).

Detection: using chemiluminescence substrate and image were captured with CCD camera.