

Anti-Protein TIC20-II, chloroplastic, N-terminal antibody

Catalog: PHY1366A

Product Information

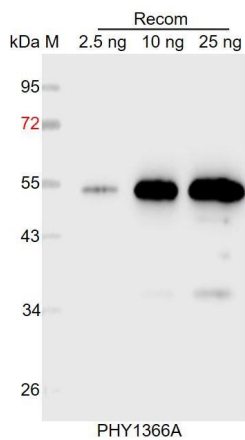
Description:	Rabbit polyclonal antibody
Background:	TIC20-II is a component of the TIC (translocon at the inner envelope membrane of chloroplasts) protein translocation machinery mediating the protein translocation across the inner envelope of plastids. The Arabidopsis genome encodes four Tic20 homologous proteins, AT1G04940(Tic20-I), AT2G47840(Tic20-II), AT4G03320(Tic20-IV) and AT5G55710(Tic20-V).
Synonyms:	TIC20-II, ATTIC20-II, TRANSLOCON AT THE INNER ENVELOPE MEMBRANE OF CHLOROPLASTS 20-II
Immunogen:	KLH-conjugated synthetic peptide (13 aa from N terminal section) derived from <i>Arabidopsis thaliana</i> TIC20-II (AT2G47840).
Form:	Lyophilized
Quantity:	150 µg
Purification:	Immunogen affinity purified
Reconstitution:	Reconstitution with 150 µl of 0.01 M sterile PBS. "Note: please spin tube briefly prior to opening it to avoid any losses that might occur from lyophilized material adhering to the cap or sides of the tube".
Stability & Storage:	Use a manual defrost freezer and avoid repeated freeze-thaw cycles. 12 months from date of receipt, -20 to -70°C as supplied. 6 months, -20 to -70°C under sterile conditions after reconstitution. 1 month, 2 to 8°C under sterile conditions after reconstitution.
Shipping:	The product is shipped at 4°C. Upon receipt, store it immediately at the temperature recommended above.

Application Information

Recommended Dilution:	Western Blot (1:1000-1:2000) Note: Optimal dilutions/concentrations should be determined by the end user.
Expected / apparent MW:	23 kDa
Predicted Reactivity:	For more species homologues information, please contact tech support at tech@phytoab.com .

Research Use Only

Application Example



Recom: 2.5 ng, 10 ng and 25 ng recombinant protein containing the peptide for immunization and having a molecular mass of 54 kDa.

Electrophoresis: 12% SDS-PAGE

Transfer: blotting to NC (nitrocellulose) membrane for 1 h.

Blocking: 5% skim milk at RT or 4°C for 1 h.

Primary antibody: 1:1000 dilution overnight at 4°C.

Secondary antibody: 1:10000 dilution using Goat Anti-Rabbit IgG H&L (HRP) (Cat# PHY6000).

Detection: using chemiluminescence substrate and image were captured with CCD camera.