

Anti-Nuclear transcription factor Y subunit C-3 antibody

Catalog: PHY0929S

Product Information

Description:	Rabbit polyclonal antibody
Background:	NF-Y transcription factors represent a complex of three proteins called NF-YA, NF-YB and NF-YC. NF-YC (NF-YC3 (AT1G54830), NF-YC4 (AT5G63470), and NF-YC9 (AT1G08970)) are required for flowering, and physically interact with both NF-YB2 and NF-YB3. Furthermore, NF-YC3, NF-YC4 and NF-YC9 can physically interact with fulllength CONSTANS (CO), and are genetically required for CO-mediated floral promotion.
Synonyms:	NF-YC3, NUCLEAR FACTOR Y, SUBUNIT C3
Immunogen:	KLH-conjugated synthetic peptide (15 aa from N terminal section) derived from <i>Arabidopsis thaliana</i> NF-YC3 (AT1G54830).
Form:	Lyophilized
Quantity:	150 µg
Purification:	Serum Peptide affinity form antibody available upon request at info@phytoab.com .
Reconstitution:	Reconstitution with 150µl of sterile water. "Note: please spin tube briefly prior to opening it to avoid any losses that might occur from lyophilized material adhering to the cap or sides of the tube".
Stability &	Use a manual defrost freezer and avoid repeated freeze-thaw cycles.
Storage:	12 months from date of receipt, -20 to -70°C as supplied. 6 months, -20 to -70°C under sterile conditions after reconstitution. 1 month, 2 to 8°C under sterile conditions after reconstitution.
Shipping:	The product is shipped at 4°C. Upon receipt, store it immediately at the temperature recommended above.

Application Information

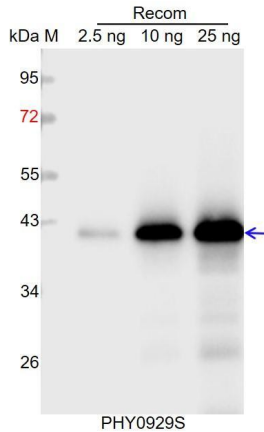
Recommended Dilution:	Western Blot (1:1000-1:2000); IP Note: Optimal dilutions/concentrations should be determined by the end user.
Expected / apparent MW:	24 kDa

Research Use Only

Predicted Reactivity:

For more species homologues information, please contact tech support at tech@phytoab.com.

Application Example



Recom: 2.5 ng, 10 ng and 25 ng recombinant protein containing the peptide for immunization and having a molecular mass of 40 kDa.

Electrophoresis: 12% SDS-PAGE

Transfer: blotting to NC (nitrocellulose) membrane for 1 h.

Blocking: 5% skim milk at RT or 4°C for 1 h.

Primary antibody: 1:1000 dilution overnight at 4°C.

Secondary antibody: 1:10000 dilution using Goat Anti-Rabbit IgG H&L (HRP) (Cat# PHY6000).

Detection: using chemiluminescence substrate and image were captured with CCD camera.