

# Anti-65-kDa microtubule-associated protein 6 antibody

Catalog: PHY0919A

## Product Information

<b>Description:</b>	Rabbit polyclonal antibody
<b>Background:</b>	Microtubule-associated protein 65-6 induces a crisscross mesh of microtubules, not bundles. AtMAP65-6 mediates the formation of a mesh-like stable and dense network formed by individual microtubules (MT). It confers MT resistance to high concentration of NaCl. The Arabidopsis contains nine MAP65 proteins: MAP65-1 (AT5G55230); MAP65-2 (AT4G30910); MAP65-3 (AT5G51600); MAP65-4 (AT3G55210); MAP65-5 (AT2G35600); MAP65-6 (AT2G00910); MAP65-7 (AT1G15360); MAP65-8 (AT1G27920); MAP65-9 (AT5G61760).
<b>Synonyms:</b>	MAP65-6, AtMAP65-6
<b>Immunogen:</b>	KLH-conjugated synthetic peptide (15 aa from C terminal section) derived from <i>Arabidopsis thaliana</i> MAP65-6 (AT2G01910).
<b>Form:</b>	Lyophilized
<b>Quantity:</b>	150 µg
<b>Purification:</b>	Immunogen affinity purified
<b>Reconstitution:</b>	Reconstitution with 150 µl of 0.01 M sterile PBS. "Note: please spin tube briefly prior to opening it to avoid any losses that might occur from lyophilized material adhering to the cap or sides of the tube".
<b>Stability &amp;</b>	Use a manual defrost freezer and avoid repeated freeze-thaw cycles.
<b>Storage:</b>	12 months from date of receipt, -20 to -70°C as supplied. 6 months, -20 to -70°C under sterile conditions after reconstitution. 1 month, 2 to 8°C under sterile conditions after reconstitution.
<b>Shipping:</b>	The product is shipped at 4°C. Upon receipt, store it immediately at the temperature recommended above.

## Application Information

<b>Recommended Dilution:</b>	Western Blot (1:1000-1:2000) Note: Optimal dilutions/concentrations should be determined by the end user.
<b>Expected / apparent MW:</b>	69 kDa

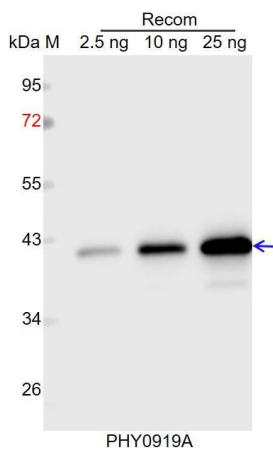
Research Use Only

### Predicted Reactivity:

Among species analyzed, the sequence of the synthetic peptide used for immunization is 100% homologues with the sequence in *Brassica rapa*, *Brassica napus*, and 80-99% homologues with the sequence in *Solanum tuberosum*, *Solanum lycopersicum*, *Nicotiana tabacum*, *Vitis vinifera*, *Populus trichocarpa*, *Gossypium raimondii*, *Cucumis sativus*.

For more species homologues information, please contact tech support at [tech@phytoab.com](mailto:tech@phytoab.com).

### Application Example



Recom: 2.5 ng, 10 ng and 25 ng recombinant protein containing the peptide for immunization and having a molecular mass of 40 kDa.

**Electrophoresis:** 12% SDS-PAGE

**Transfer:** blotting to NC (nitrocellulose) membrane for 1 h.

**Blocking:** 5% skim milk at RT or 4°C for 1 h.

**Primary antibody:** 1:1000 dilution overnight at 4°C.

**Secondary antibody:** 1:10000 dilution using Goat Anti-Rabbit IgG H&L (HRP) (Cat# PHY6000).

**Detection:** using chemiluminescence substrate and image were captured with CCD camera.