

Anti-Alpha,alpha-trehalose-phosphate synthase [UDP-forming] 5 antibody

Catalog: PHY0960A

Product Information

Description:	Rabbit polyclonal antibody
Background:	TPS5 is an enzyme putatively involved in trehalose biosynthesis. The protein has a trehalose synthase (TPS)-like domain that may or may not be active as well as a trehalose phosphatase (TPP)-like domain. Phosphorylated TPS5 extracted from Arabidopsis cells binds directly to 14-3-3 isoforms.
Synonyms:	TPS5, TREHALOSE -6-PHOSPHATASE SYNTHASE S5, TREHALOSE PHOSPHATASE/SYNTHASE 5
Immunogen:	KLH-conjugated synthetic peptide (15 aa from C terminal section) derived from <i>Arabidopsis thaliana</i> TPS5 (AT4G17770).
Form:	Lyophilized
Quantity:	150 µg
Purification:	Immunogen affinity purified
Reconstitution:	Reconstitution with 150 µl of 0.01 M sterile PBS. "Note: please spin tube briefly prior to opening it to avoid any losses that might occur from lyophilized material adhering to the cap or sides of the tube".
Stability & Storage:	Use a manual defrost freezer and avoid repeated freeze-thaw cycles. 12 months from date of receipt, -20 to -70°C as supplied. 6 months, -20 to -70°C under sterile conditions after reconstitution. 1 month, 2 to 8°C under sterile conditions after reconstitution.
Shipping:	The product is shipped at 4°C. Upon receipt, store it immediately at the temperature recommended above.

Application Information

Recommended Dilution:	Western Blot (1:1000-1:2000) Note: Optimal dilutions/concentrations should be determined by the end user.
Expected / apparent MW:	97 kDa
Predicted Reactivity:	Among species analyzed, the sequence of the synthetic peptide used for immunization is 100% homologues with the sequence in <i>Brassica</i>

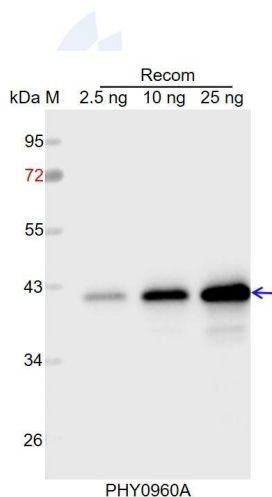
Research Use Only

napus, *Brassica rapa*, *Medicago truncatula*, *Populus trichocarpa*, and 80-99% homologues with the sequence in *Hordeum vulgare*, *Gossypium raimondii*, *Hordeum vulgare*, *Triticum aestivum*, *Oryza sativa*, *Spinacia oleracea*, *Cucumis sativus*, *Solanum tuberosum*, *Solanum lycopersicum*, *Nicotiana tabacum*, *Glycine max*, *Vitis vinifera*, *Setaria viridis*.

The sequence of the synthetic peptide used for immunization is 93% (14/15) homologues with the sequence in ATTPS6 (AT1G68020), and 86% (13/15) homologues with the sequence in ATTPS7 (AT1G06410), 80% (12/15) homologues with the sequence in ATTPS11 (AT2G18700).

For more species homologues information, please contact tech support at tech@phytoab.com.

Application Example



Recom: 2.5 ng, 10 ng and 25 ng recombinant protein containing the peptide for immunization and having a molecular mass of 40 kDa.

Electrophoresis: 12% SDS-PAGE

Transfer: blotting to NC (nitrocellulose) membrane for 1 h.

Blocking: 5% skim milk at RT or 4°C for 1 h.

Primary antibody: 1:1000 dilution overnight at 4°C.

Secondary antibody: 1:10000 dilution using Goat Anti-Rabbit IgG H&L (HRP) (Cat# PHY6000).

Detection: using chemiluminescence substrate and image were captured with CCD camera.