

Anti-Endoribonuclease Dicer homolog 1 antibody

Catalog: PHY1750A

Product Information

Description:	Rabbit polyclonal antibody
Background:	DCL1 is a Dicer homolog. DCL1 is the ribonuclease that carries out miRNA biogenesis in plants. DCL1 is able to produce miRNA and siRNA. Substrate pri-miRNA recognition by DCL1 requires two double stranded RNA binding domains located at the C-terminus of the protein.
Synonyms:	DCL1, ABNORMAL SUSPENSOR 1, ASU1, ATDCL1, CAF, CARPEL FACTORY, DICER-LIKE1, EMB60, EMB76, EMBRYO DEFECTIVE 60, EMBRYO DEFECTIVE 76, SHORT INTEGUMENTS 1, SIN1, SUS1, SUSPENSOR 1
Immunogen:	KLH-conjugated synthetic peptide (15 aa from N terminal section) derived from <i>Arabidopsis thaliana</i> DCL1 (AT1G01040).
Form:	Lyophilized
Quantity:	150 µg
Purification:	Immunogen affinity purified
Reconstitution:	Reconstitution with 150 µl of 0.01 M sterile PBS. "Note: please spin tube briefly prior to opening it to avoid any losses that might occur from lyophilized material adhering to the cap or sides of the tube".
Stability &	Use a manual defrost freezer and avoid repeated freeze-thaw cycles.
Storage:	12 months from date of receipt, -20 to -70°C as supplied. 6 months, -20 to -70°C under sterile conditions after reconstitution. 1 month, 2 to 8°C under sterile conditions after reconstitution.
Shipping:	The product is shipped at 4°C. Upon receipt, store it immediately at the temperature recommended above.

Application Information

Recommended Dilution:	Western Blot (1:1000-1:2000) Note: Optimal dilutions/concentrations should be determined by the end user.
Expected / apparent MW:	214 kDa

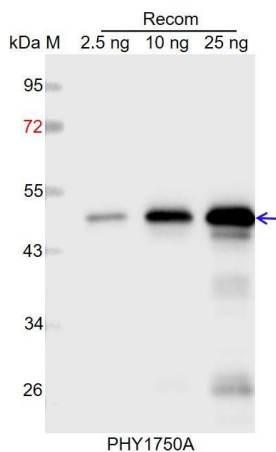
Research Use Only

Predicted Reactivity:

Among species analyzed, the sequence of the synthetic peptide used for immunization is 80-99% homologues with the sequence in *Brassica rapa*, *Brassica napus*.

For more species homologues information, please contact tech support at tech@phytoab.com.

Application Example



Recom: 2.5 ng, 10 ng and 25 ng recombinant protein containing the peptide for immunization and having a molecular mass of 50 kDa.

Electrophoresis: 12% SDS-PAGE

Transfer: blotting to NC (nitrocellulose) membrane for 1 h.

Blocking: 5% skim milk at RT or 4°C for 1 h.

Primary antibody: 1:1000 dilution overnight at 4°C.

Secondary antibody: 1:10000 dilution using Goat Anti-Rabbit IgG H&L (HRP) (Cat# PHY6000).

Detection: using chemiluminescence substrate and image were captured with CCD camera.